

Repair - Parts List



LineLazer™ 130HS Airless Paint Striper

Chinese Patent ZL03801904.3; Australian Patent No. 2005319204; Russian Patent No. 2398927;

U.S. Patent 6,913,417; 7,654,771; Europe Patent No. 1841310; Ukraine Registration No. 90886

313776B

ENG

- For the application of line striping materials -

3300 psi (228 bar, 22.8 MPa) Maximum Working Pressure

257780	✓			✓		
287025	✓			✓		



313775



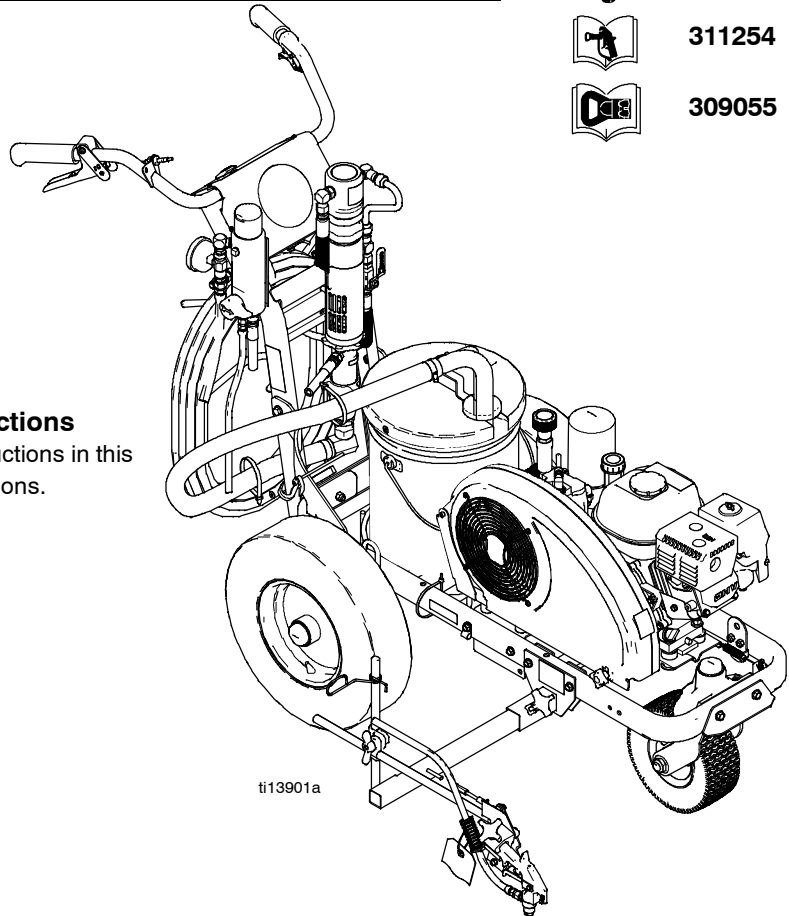
311845



311254



309055



ti13901a



Important Safety Instructions

Read all warnings and instructions in this manual. Save these instructions.

PROVEN QUALITY. LEADING TECHNOLOGY.

GRACO INC. P.O. BOX 1441 MINNEAPOLIS, MN 55440-1441
Copyright 2005, Graco Inc. is registered to I.S. EN ISO 9001








H003

Table of Contents

Warnings	3	Engine	14
Spray Tip Selection Table	5	Hydraulic Motor Yoke	15
General Repair Information	6	Oil/Filter Change	17
Maintenance	7	Displacement Pump	18
Troubleshooting	8	Parts	19
Repair		Technical Data	31
Hydraulic Pump	11	Graco Warranty	32
Fan Belt	13		

Warnings

The following Warnings are for the safe setup, use, grounding, maintenance and repair of this equipment. The exclamation point symbol alerts you to a general warning and the hazard symbols refer to procedure-specific risks. Refer back to these Warnings.

 WARNING	
	<p>FIRE AND EXPLOSION HAZARD</p> <p>Flammable fumes, such as solvent and paint fumes, in work area can ignite or explode. To help prevent fire and explosion:</p> <ul style="list-style-type: none">• Use equipment only in well ventilated area.• Do not fill fuel tank while engine is running or hot; shut off engine and let it cool. Fuel is flammable and can ignite or explode if spilled on hot surface.• Eliminate all ignition sources such as pilot lights, cigarettes, portable electric lamps and plastic drop cloths (potential static arc).• Keep work area free of debris, including solvent, rags and gasoline.• Do not plug or unplug power cords or turn power or light switches on or off when flammable fumes are present.• Ground equipment and conductive objects in work area. See Grounding instructions.• Use grounded hoses only.• Hold gun firmly to side of grounded pail when triggering into pail.• If there is static sparking or you feel a shock, stop operation immediately. Do not use equipment until you identify and correct the problem.• Keep a fire extinguisher in the work area.
	<p>CARBON MONOXIDE HAZARD</p> <p>Exhaust contains poisonous carbon monoxide, which is colorless and odorless. Breathing carbon monoxide can cause death. Do not operate in an enclosed area.</p>
	<p>SKIN INJECTION HAZARD</p> <p>High-pressure fluid from gun, hose leaks, or ruptured components will pierce skin. This may look like just a cut, but it is a serious injury that can result in amputation. Get immediate surgical treatment.</p> <ul style="list-style-type: none">• Do not point gun at anyone or any part of the body.• Do not put your hand over spray tip.• Do not stop or deflect leaks with your hand, body, glove or rag.• Do not spray without tip guard and trigger guard installed.• Engage trigger lock when not spraying.• Follow Pressure Relief Procedure in this manual when you stop spraying and before cleaning, checking or servicing equipment.
	<p>PRESSURIZED EQUIPMENT HAZARD</p> <p>Fluid from gun/dispense valve, leaks or ruptured components can splash in the eyes or on skin and cause serious injury.</p> <ul style="list-style-type: none">• Follow Pressure Relief Procedure in this manual when you stop spraying and before cleaning, check or servicing equipment.• Tighten all fluid connections before operating equipment.• Check hoses, tubes and couplings daily. Replace worn or damaged parts immediately.

WARNING



EQUIPMENT MISUSE HAZARD

Misuse can cause death or serious injury.

- Do not exceed the maximum working pressure of the lowest rated system component. See **Technical Data** in all equipment manuals.
- Use fluids or solvents that are compatible with equipment's wetted parts. See the **Technical Data** in all equipment manuals. Read the fluid and solvent manufacturer's warnings.
- Check the equipment daily. Repair or replace worn or damaged parts immediately.
- Do not alter or modify equipment
- Read all instruction manuals, tags, and labels before operating the equipment.
- Use the equipment only for its intended purpose. Call your Graco distributor for information.
- Route the hoses away from the traffic areas, sharp edges, moving parts, and hot surfaces.
- Do not kink or overbend hoses or use hoses to pull the equipment.
- Keep children and animals away from work area.
- Comply with all applicable safety regulations.



BURN HAZARD

Equipment surfaces and fluid that's heated can become very hot during operation. To avoid severe burns, do not touch hot fluid or equipment. Wait until equipment/fluid has cooled completely.



MOVING PARTS HAZARD

Moving parts can pinch or amputate fingers and other body parts.

- Keep clear of moving parts.
- Do not operate equipment with protective guards or covers removed.
- Pressurized equipment can start without warning. Before checking, moving, or servicing equipment, follow the **Pressure Relief Procedure** in this manual. Disconnect power or air supply.



PERSONAL PROTECTIVE EQUIPMENT

You must wear appropriate protective equipment when operating, servicing, or when in the operating area of the equipment to help protect you from serious injury, including eye injury, inhalation of toxic fumes, burns and hearing loss. This equipment includes but is not limited to:


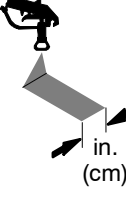
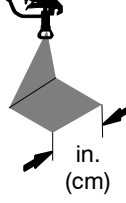
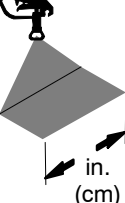
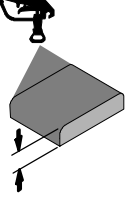
- Protective eyewear
- Clothing and respirator as recommended by the fluid and solvent manufacturer
- Gloves
- Hearing protection



RECOIL HAZARD

Brace yourself; gun may recoil when triggered and cause you to fall, which could cause serious injury.

Tip Selection

	 in. (cm)	 in. (cm)	 in. (cm)	 in. (cm)			
LL5213*	2 (5)				✓		
LL5215*	2 (5)					✓	
LL5217		4 (10)				✓	
LL5219		4 (10)					✓
LL5315		4 (10)			✓		
LL5317		4 (10)			✓		
LL5319		4 (10)				✓	
LL5321		4 (10)				✓	
LL5323		4 (10)				✓	
LL5325		4 (10)					✓
LL5327		4 (10)					✓
LL5329		4 (10)					✓
LL5331		4 (10)					✓
LL5333		4 (10)					✓
LL5335		4 (10)					✓
LL5355		4 (10)					✓
LL5417			6 (15)		✓		
LL5419			6 (15)		✓		
LL5421			6 (15)		✓		
LL5423			6 (15)			✓	
LL5425			6 (15)			✓	
LL5427			6 (15)			✓	
LL5429			6 (15)			✓	
LL5431			6 (15)				✓
LL5435			6 (15)				✓
LL5621				12 (30)	✓		
LL5623				12 (30)	✓		
LL5625				12 (30)	✓		
LL5627				12 (30)	✓		
LL5629				12 (30)	✓		
LL5631				12 (30)		✓	
LL5635				12 (30)		✓	
LL5639				12 (30)			✓

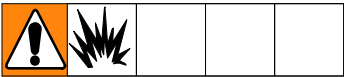
* Use 100 mesh filter to reduce tip clogs

General Repair Information



1. **Keep all screws, nuts, washers, gaskets, and electrical fittings removed during repair procedures.** These parts are not normally provided with replacement assemblies.
2. **Test repair** after problem is corrected.
3. **If sprayer does not operate properly,** review repair procedure to verify procedure was done correctly. If necessary, see Troubleshooting Guide, page 8, for other possible solutions.
4. **Install belt guard before operation** of sprayer and replace if damaged. Belt guard reduces risk of pinching and loss of fingers; see preceding **WARNING**.

Grounding



Ground sprayer with grounding clamp to earth ground when flushing sprayer. Fig. 1.

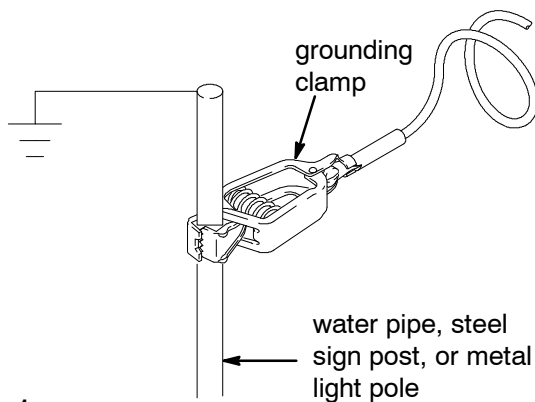
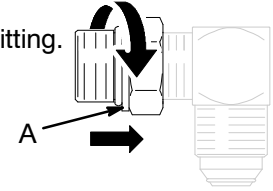


Fig. 1

06250

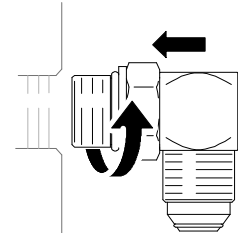
SAE O-Ring Installation

1. Unscrew lock nut to touch fitting.



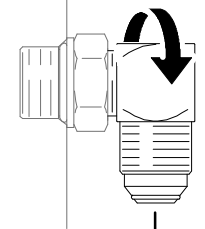
2. Lubricate o-ring (A).

3. Screw in fitting hand tight.



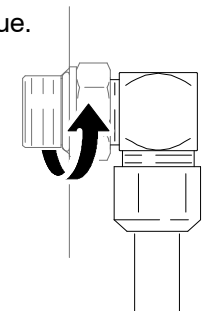
ti5415a

4. Unscrew fitting until oriented properly.



ti5416a

5. Tighten lock nut to indicated torque. (Make sure washer is seated properly without pinching o-ring).



ti5417a

Maintenance



Pressure Relief Procedure

1. Engage gun trigger safety.
2. Turn engine ON/OFF switch to OFF.
3. Move pump valve to OFF (clockwise) and turn pressure control knob fully counterclockwise.
4. Disengage trigger safety. Hold metal part of gun firmly to side of grounded metal pail, and trigger gun to relieve pressure.
5. Engage gun trigger safety.
6. Open pressure drain valve. Leave valve open until ready to spray again.

If you suspect that the spray tip or hose is completely clogged, or that pressure has not been fully relieved after following the steps above, VERY SLOWLY loosen tip guard retaining nut or hose end coupling to relieve pressure gradually, then loosen completely. Now clear tip or hose.

CAUTION

- Minimum hose size allowable for proper sprayer operation is 3/8 in. x 50 ft
- For detailed engine maintenance and specifications, refer to separate Honda Engines Owner's Manual, supplied.

DAILY: Check engine oil level and fill as necessary.

DAILY: Check hydraulic oil level and fill as necessary.

DAILY: Check hose for wear and damage.

DAILY: Check gun safety for proper operation.

DAILY: Check prime/spray drain valve for proper operation.

DAILY: Check and fill gas tank.

DAILY: Check that displacement pump is tight.

DAILY: Top off TSL level in displacement pump packing nut to help prevent material buildup on piston rod and early wear of packings.

AFTER THE FIRST 20 HOURS OF OPERATION:

Drain engine oil and refill with clean oil. Reference Honda Engines Owner's Manual for correct oil viscosity.

WEEKLY: Remove engine air filter cover and clean element and replace, if necessary. If operating in an unusually dusty environment: check filter daily.

WEEKLY/DAILY: Remove any debris from hydraulic rod.

AFTER EACH 100 HOURS OF OPERATION:

Change engine oil. Reference Honda Engines Owner's Manual for correct oil viscosity.

SEMI-ANNUALLY:

Check belt wear, page 13; replace if necessary.

YEARLY OR 2000 HOURS:

Replace hydraulic oil and filter element with Graco hydraulic oil 169236 (5 gallon/18.9 liter) or 207428 (1 gallon/3.8 liter) and filter element 246173; page 22.

SPARK PLUG: Use only BPR6ES (NGK) or W20EPR-U (NIPPONDENSO) plug. Gap plug to 0.028 to 0.031 in. (0.7 to 0.8 mm). Use spark plug wrench when installing and removing plug.

Caster Wheel

(See letter call-outs in **Parts** drawing on page 30)

1. Once each year, tighten nut (127, Detail A) until spring washer bottoms out. Then back off the nut 1/2 to 3/4 turn.
2. Once each year, tighten nut (127) until it begins to compress spring washer. Then tighten the nut an additional 1/4 turn.
3. Once each month, grease wheel bearing (F).
4. Check pin (55) for wear. If pin is worn out, there will be play in the caster wheel. Reverse or replace pin as needed.
5. Check caster wheel alignment as necessary. To align: loosen bolt (145), align wheel and tighten bolt.

Troubleshooting



PROBLEM	CAUSE	SOLUTION
Gas engine pulls hard (won't start)	Hydraulic pressure is too high	Turn hydraulic pressure knob counterclockwise to lowest setting
Engine won't start	Engine switch is OFF	Turn engine switch ON
	Engine is out of gas	Refill gas tank. Honda Engines Owner's Manual.
	Engine oil level is low	Try to start engine. Replenish oil, if necessary. Honda Engines Owner's Manual.
	Spark plug cable is disconnected or damaged	Connect spark plug cable or replace spark plug
	Cold engine	Use choke
	Fuel shutoff lever is OFF	Move lever to ON position
	Oil is seeping into combustion chamber	Remove spark plug. Pull starter 3 to 4 times. Clean or replace spark plug. Start engine. Keep sprayer upright to avoid oil seepage.
Engine operates, but displacement pump does not operate	Pump valve is OFF	Turn pump valve ON.
	Pressure setting is too low	Turn pressure adjusting knob clockwise to increase pressure. Manual 311018.
	Fluid filter (11) is dirty	Clean filter.
	Tip or tip filter is clogged	Clean tip or tip filter. Manual 311254.
	Displacement pump piston rod is stuck due to dried paint	Repair pump. Manual 311845.
	Belt worn, broken or off pulley	Replace
	Hydraulic fluid too low	Shut of sprayer. Add fluid*.
Hydraulic motor not shifting	Set pump valve OFF. Turn pressure down. Turn engine OFF. Pry rod up or down until hydraulic motor shifts.	

*Check hydraulic fluid level often. Do not allow it to become too low. Use only Graco approved hydraulic fluid, page 7.

Troubleshooting

PROBLEM	CAUSE	SOLUTION
Displacement pump operates, but output is low on up-stroke	Piston ball is not seating	Service piston ball. Manual 311845.
	Piston packings are worn or damaged	Replace packings. Manual 311845.
Displacement pump operates but output is low on downstroke and/or on both strokes	Strainer (34e) is clogged	Clean strainer.
	O-ring in pump is worn or damaged	Replace o-ring. Manual 311845.
	Intake valve ball is packed with material or is not seating properly	Clean intake valve. Manual 311845.
	Engine speed is too low	Increase throttle setting. Manual 313775.
	Suction tube air leak	Tighten suction tube.
	Pressure setting is too low	Increase pressure. Manual 313775.
	Fluid filter (11), tip filter or tip is clogged or dirty	Clean filter. Manual 313775 or 311254.
	Large pressure drop in hose with heavy materials	Use larger diameter hose and/or reduce overall length of hose. Use of more than 100 ft of 1/4 in. hose significantly reduces performance of sprayer. Use 3/8 in. hose for optimum performance (50 ft minimum).
Pump is difficult to prime	Air in pump or hose	Check and tighten all fluid connections. Reduce engine speed and cycle pump as slowly as possible during priming.
	Intake valve is leaking	Clean intake valve. Be sure ball seat is not nicked or worn and that ball seats well. Reassemble valve.
	Pump packings are worn	Replace pump packings. Manual 311845.
	Paint is too thick	Thin the paint according to the supplier's recommendations
	Engine speed is too high	Decrease throttle setting before priming pump. Manual 313775.
High engine speed at no load	Misadjusted throttle setting	Reset throttle to 3700 - 3800 engine rpm at no load
	Worn engine governor	Replace or service engine governor
Low stall or run pressure shown on display	New pump or new packings	Pump break-in period takes up to 100 gallons of material
	Faulty transducer	Replace transducer

Troubleshooting

PROBLEM	CAUSE	SOLUTION
Excessive paint leakage into throat packing nut	Throat packing nut is loose	Remove throat packing nut spacer. Tighten throat packing nut just enough to stop leakage.
	Throat packings are worn or damaged	Replace packings. Manual 311845.
	Displacement rod is worn or damaged	Replace rod. Manual 311845.
Fluid is spitting from gun	Air in pump or hose	Check and tighten all fluid connections. Reprime pump. Manual 313775.
	Tip is partially clogged	Clear tip. Manual 311254.
	Fluid supply is low or empty	Refill fluid supply. Prime pump. Manual 313775. Check fluid supply often to prevent running pump dry.
Excessive leakage around hydraulic motor piston rod wiper	Piston rod seal worn or damaged	Replace these parts.
Fluid delivery is low	Pressure setting too low	Increase pressure. See manual 313775.
	Displacement pump outlet filter (if used) is dirty or clogged	Clean filter
	Intake line to pump inlet is not tight	Tighten
	Hydraulic motor is worn or damaged	Bring sprayer to Graco distributor for repair
	Large pressure drop in fluid hose	Use larger diameter or shorter hose
The sprayer overheats	Paint buildup on hydraulic components	Clean
	Oil level is low	Fill with oil, page 7.
Excessive hydraulic pump noise	Low hydraulic fluid level	Shut off sprayer. Add fluid*, page 7.

Hydraulic Pump

Removal



1. Allow hydraulic system to cool before beginning service.
2. Relieve pressure; page 7.
3. Place drip pan or rags under sprayer to catch hydraulic oil that leaks out during repair.
4. Remove drain plug (195) and oil filter (199) and allow hydraulic oil to drain.
5. Remove screw (224), loosen belt guard knob (241) and belt guard (24).
6. Raise motor and remove belt (143).
7. Remove two set screws (169) and fan pulley (86).
8. Remove case drain tube (251).
9. Remove elbow (182).
10. Loosen screw (184) and remove pressure control guard (63).
11. Loosen set screw (102) and remove remote pressure control cable (12).
12. Remove eight screws (184) and washers (101), reservoir cover (237), filter assembly (A) and gasket (85).
13. Remove four screws (215) and o-rings (178), o-ring (180) and hydraulic pump (252) from reservoir cover (237).

Installation

1. Install hydraulic pump (252) on reservoir cover (237) with four screws (215) and o-rings (178), o-ring (180); torque 100 in-lb (11 N·m).
2. Install gasket (85) filter assembly (A) and reservoir cover (237) with eight washers (101) and screws (184); torque 90 in-lb (10 N·m).
3. Install elbow (182) per instructions, page 6; torque to 15 ft-lb (20.3 N·m).
4. Install pressure control guard (63) and tighten screw (184).
5. Connect hydraulic hoses (32) and (35).
6. Install case drain tube (251); torque to 15 ft-lb (20.3 N·m).
7. Install fan pulley (86) with two set screws (193).
8. Raise motor and install belt (143).
9. Install belt guard (24) with screw (224) and belt guard knob (241).
10. Install remote pressure control cable (12). Tighten set screw (102).
11. Install drain plug (195); torque to 110 in-lb (12.4 N·m). Install oil filter (199); tighten 3/4 turn after gasket contacts base. Fill with Graco hydraulic oil, page 7.
12. Start up and allow pump to operate at low pressure for approximately 5 minutes to purge all air.
13. Check and top off hydraulic oil level.

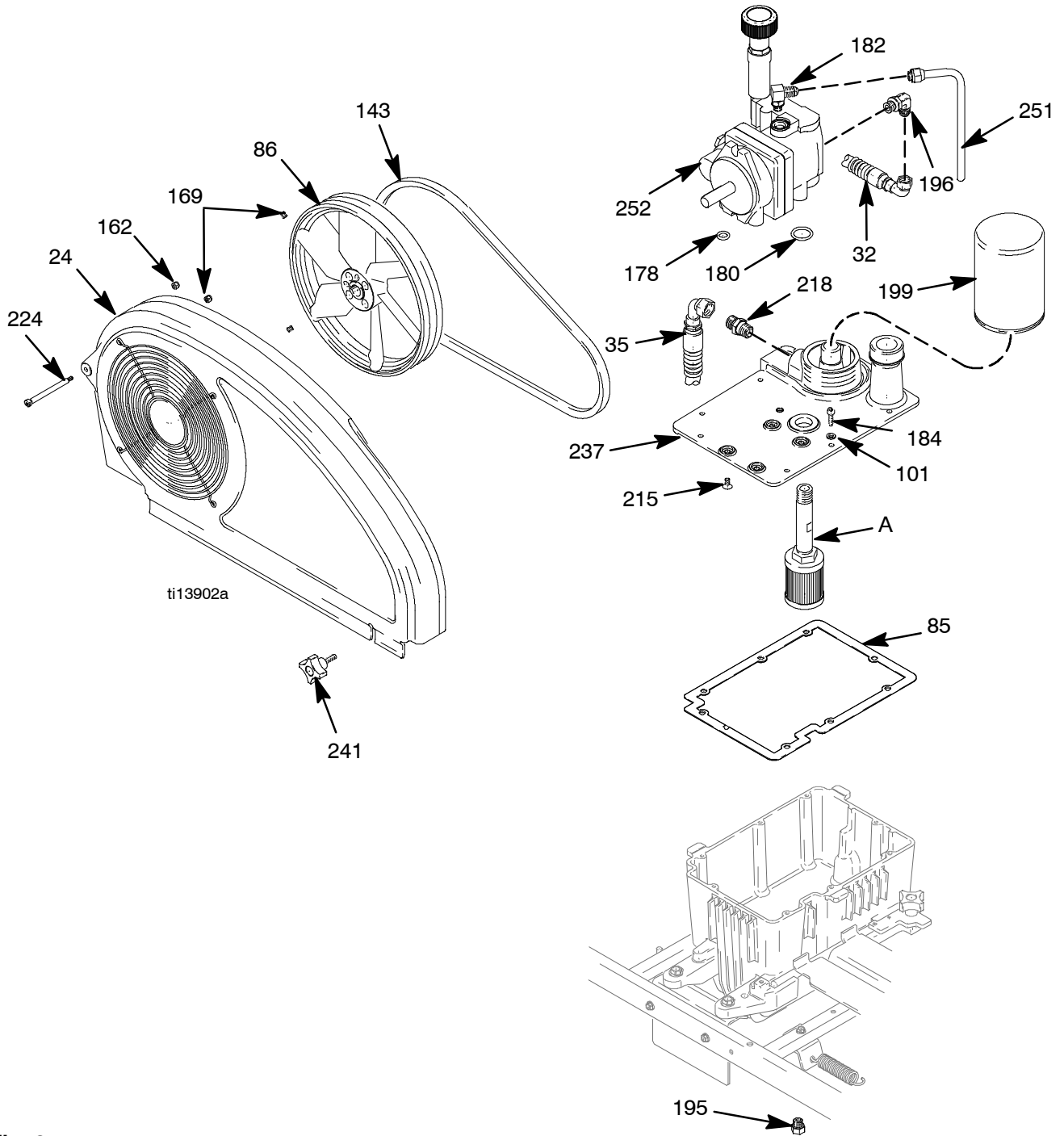


Fig. 2

Fan Belt

Removal



1. Relieve pressure; page 7.
2. Fig. 3. Loosen belt guard knob (241).
3. Rotate belt guard (24) up.
4. Lift engine (185) up to remove tension on belt (143).
5. Remove belt from fan pulley (86) and fan pulley (87a).

Installation

1. Thread belt (143) around fan pulley (87a) and fan pulley (86).
2. Lower engine (185) to put tension on belt.
3. Rotate belt guard (24) down.
4. Tighten belt guard knob (241).

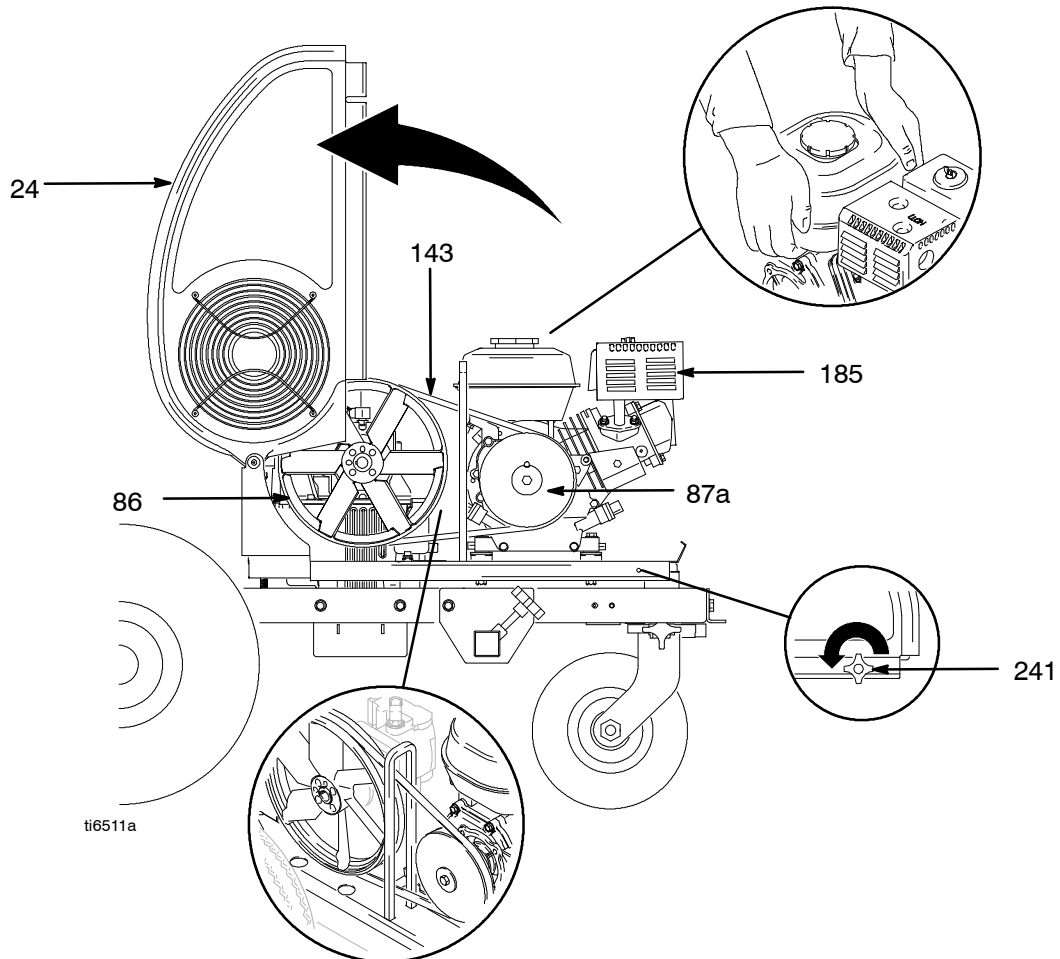


Fig. 3

Engine

Removal



1. Relieve pressure; page 7.
2. Do **Fan Belt, Removal**; page 13.
3. Loosen hand nut (241). Swing bracket (30) out.
4. Fig. 4. Disconnect red and black leads from engine (185).
5. Remove engine and rocker plate (87c) from sprayer.
6. Remove four screws (189), washers (114), washers (170) and nuts (118) and remove rocker plate, dampeners (59) and washers (114) from engine.

Installation

1. Install rocker plate (87c), dampeners (59) and washers (170), washers (114) on engine (185) with four screws (189), washers (170) and nuts (118); torque to 20 ft-lb (27.1 N·m).
2. Install engine and rocker plate (87c) on sprayer.
3. Connect red and black leads.
4. Do **Fan Belt, Installation**; page 13.
5. Swing motor retainer bracket (30) in. Tighten hand nut (241).

NOTE: All service to the engine must be performed by an authorized HONDA dealer.

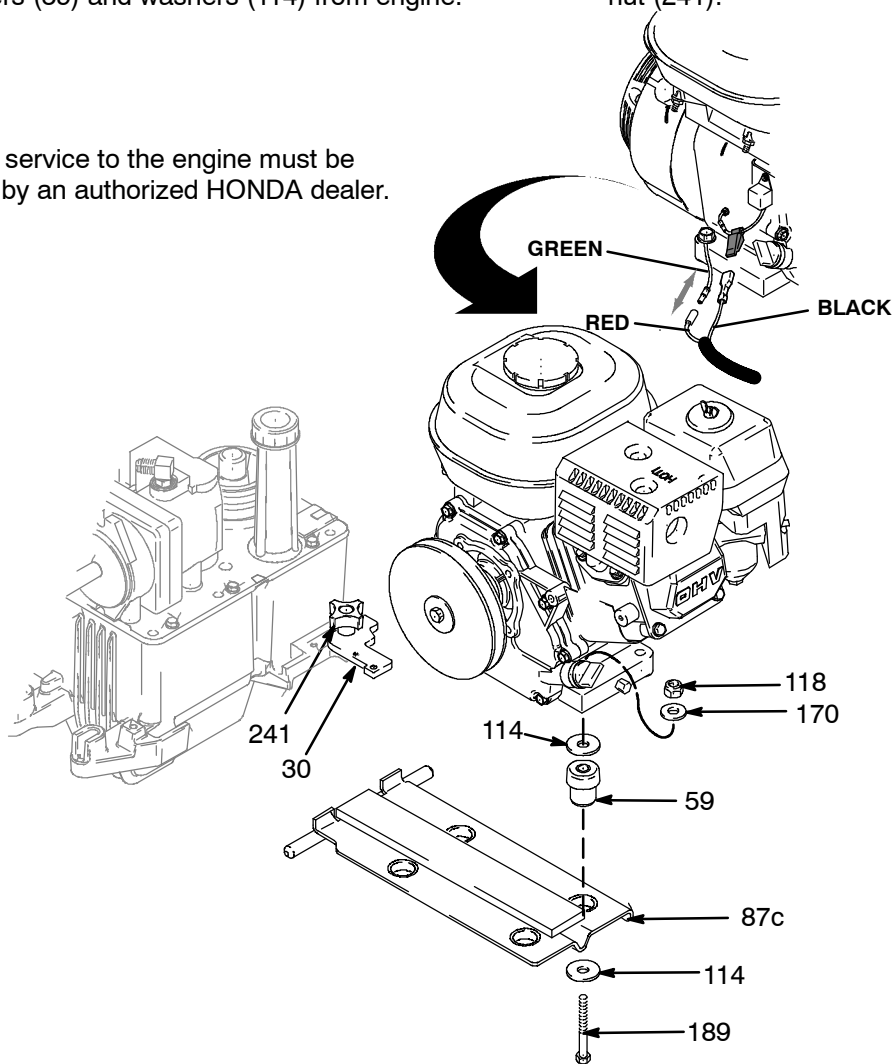


Fig. 4

Hydraulic Motor Yoke

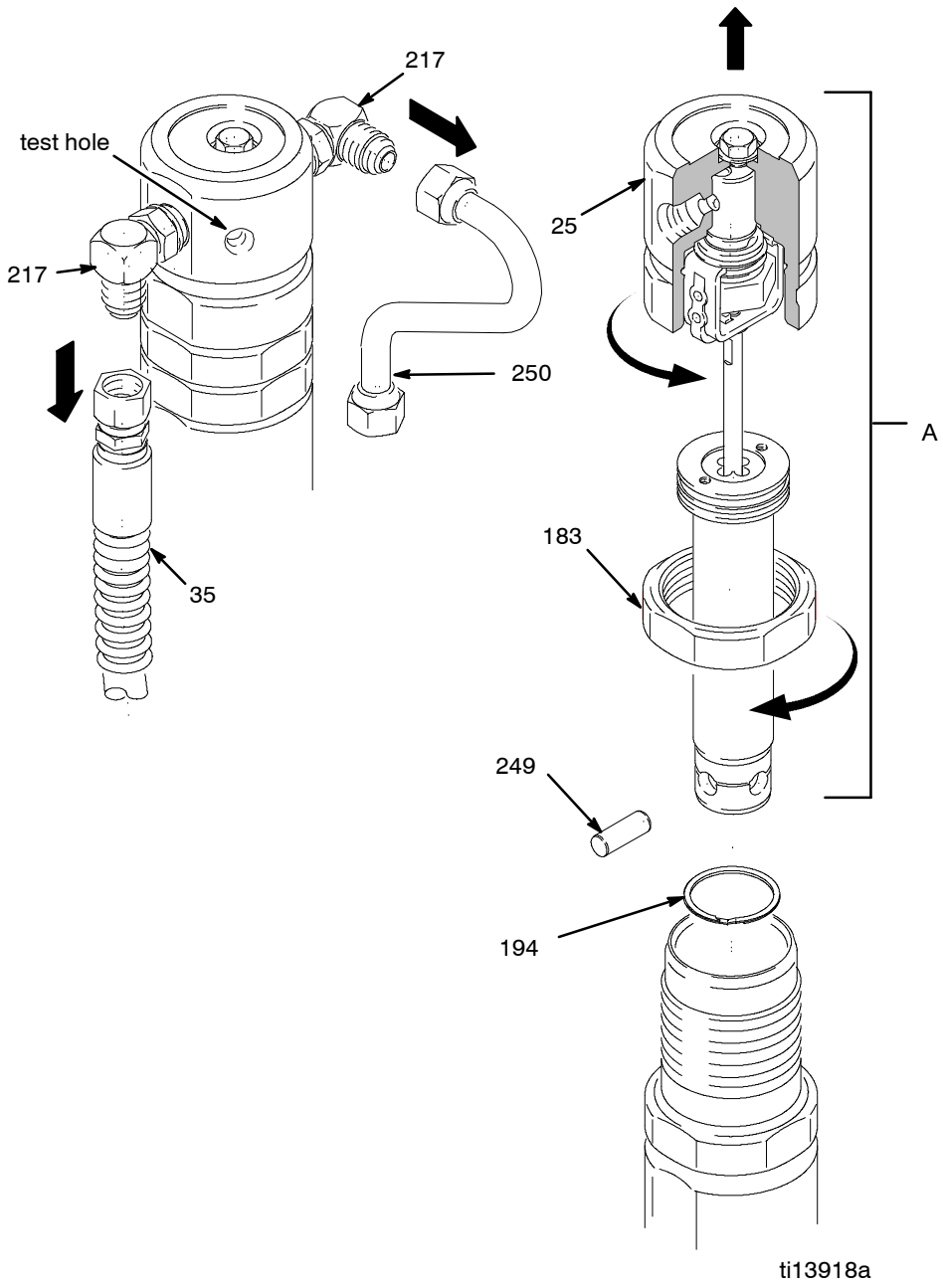
Removal



1. Relieve pressure; page 7.
2. Place drip pan or rags under sprayer to catch hydraulic oil that leaks out during repair.
3. Fig. 5. Slide retainer clip (194) down to remove. Remove pump pin (249).
4. Remove hydraulic lines (35, 250) from fittings (217) at top left and right side of hydraulic motor.
5. Loosen jam nut (183).
6. Unscrew and remove hydraulic motor cap (25).
7. Slide piston rod/hydraulic motor cap assembly (A) from hydraulic motor cylinder.

Installation

1. Slide piston rod assembly (A) into hydraulic motor cylinder.
2. Screw down hydraulic motor cap (25) until cap bottoms out. Unscrew hydraulic motor cap until inlet and outlet align with hydraulic line fittings and test hole in hydraulic motor cap points toward belt guard (24).
3. Torque jam nut (183) against hydraulic motor cap (25) to 150 ft-lb (17 N·m).
4. Install hydraulic lines (35, 250) to fittings (217) to top left and right side of hydraulic motor per procedure on page 6; torque to 40 ft-lb (54.2 N·m).
5. Pull start rope slowly to align pin holes of hydraulic motor and displacement pump (21). Connect with pump pin (249); and retainer clip (194), page 18.
6. Start engine and operate pump for 30 seconds. Turn engine OFF. Check hydraulic oil level and fill with Graco hydraulic oil, page 7.



ti13918a

Fig. 5

Oil/Filter Change

Removal

1. Fig. 6. Place drip pan or rags under sprayer to catch hydraulic oil that drains out.
2. Remove drain plug (195). Allow hydraulic oil to drain.
3. Unscrew filter (199) slowly – oil runs into groove and drains out rear.

Installation

1. Install drain plug (195). Apply a light coat of oil to oil filter gasket and install oil filter (199). Tighten oil filter 3/4 turn after gasket contacts base.
2. Fill with 1.25 gallons (4.73 liters) of Graco hydraulic oil 169236 (5 gallon/20 liter) or 207428 (1 gallon/3.8 liter)
3. Check oil level.

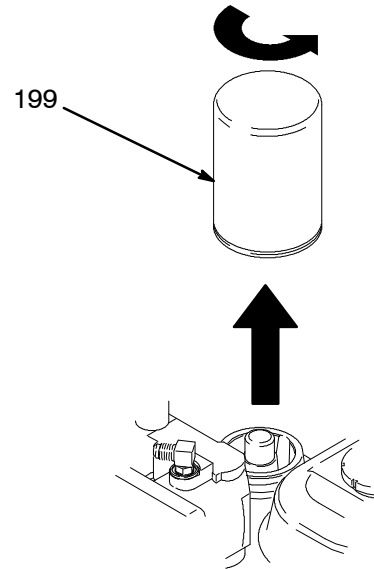


Fig. 6

ti2271a

Displacement Pump

See manual 311845 for pump repair instructions.

Removal

1. Flush pump.



2. Relieve pressure; page 7.
3. Fig. 7. Remove suction tube (34) and hose (26).

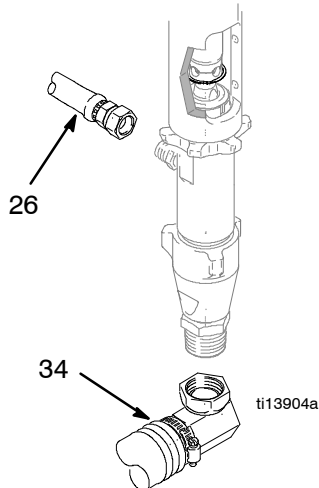


Fig. 7

4. Fig. 8. Push retaining spring (194) up. Push out pin (249).

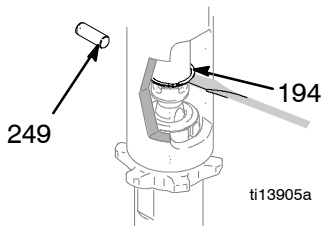


Fig. 8

5. Fig. 9. Loosen jam nut. Unscrew pump.

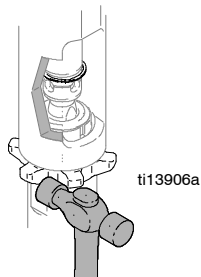


Fig. 9

Installation

CAUTION

If the pump jam nut loosens during operation, the threads of the hydraulic motor manifold will be damaged. Tighten jam nut as specified.

1. Fig. 10. Screw jam nut to bottom of pump threads. Screw pump completely into manifold. Unscrew pump from manifold until pump outlet aligns with hose. Hand tighten jam nut, then tap 1/8 to 1/4 turn with hammer or torque to 200 ft-lb (270 N·m).

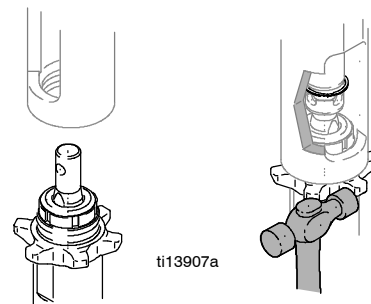


Fig. 10



2. Fig. 11. Slowly pull engine starter rope until pump rod pin hole is aligned with hydraulic rod hole. Fig. 8. Push pin (249) into hole. Push retaining spring (194) into groove.

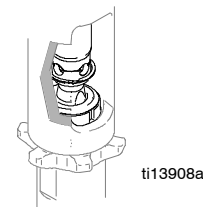


Fig. 11

- Fig. 12. Fill packing nut with Graco TSL.

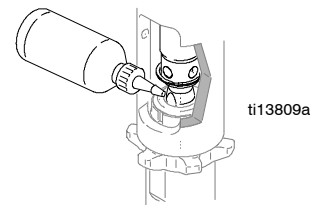
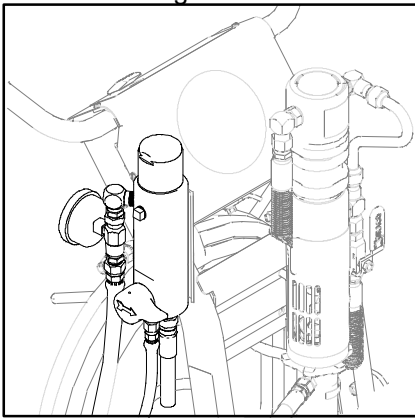


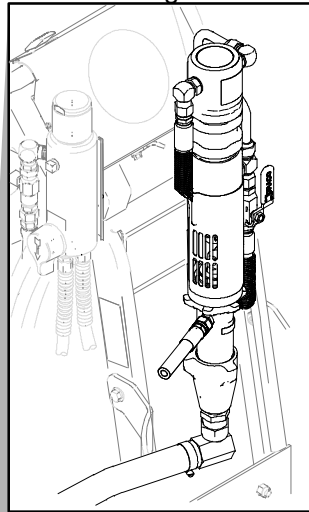
Fig. 12

Parts - LineLazer IV 130HS

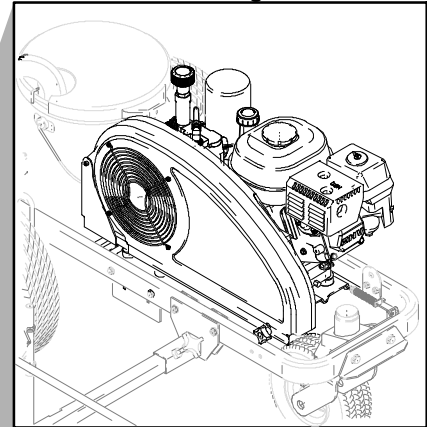
Parts Page 30



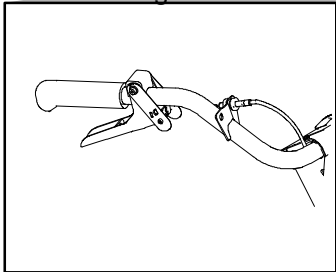
Parts Page 34



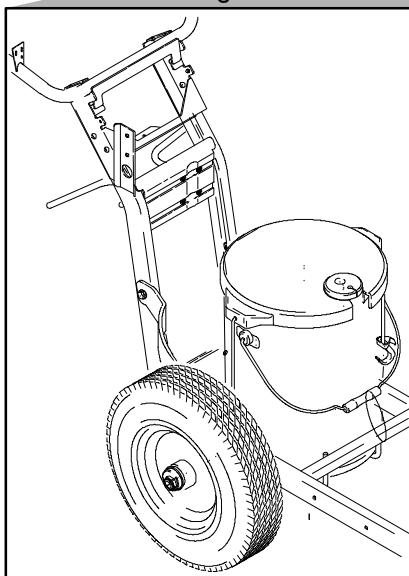
Parts Page 34



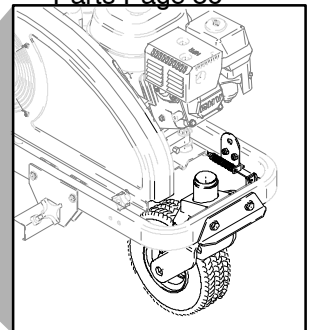
Parts Page 28



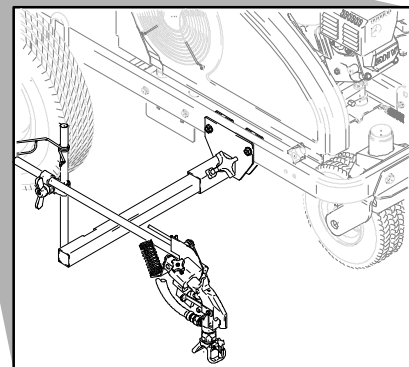
Parts Page 26



Parts Page 36

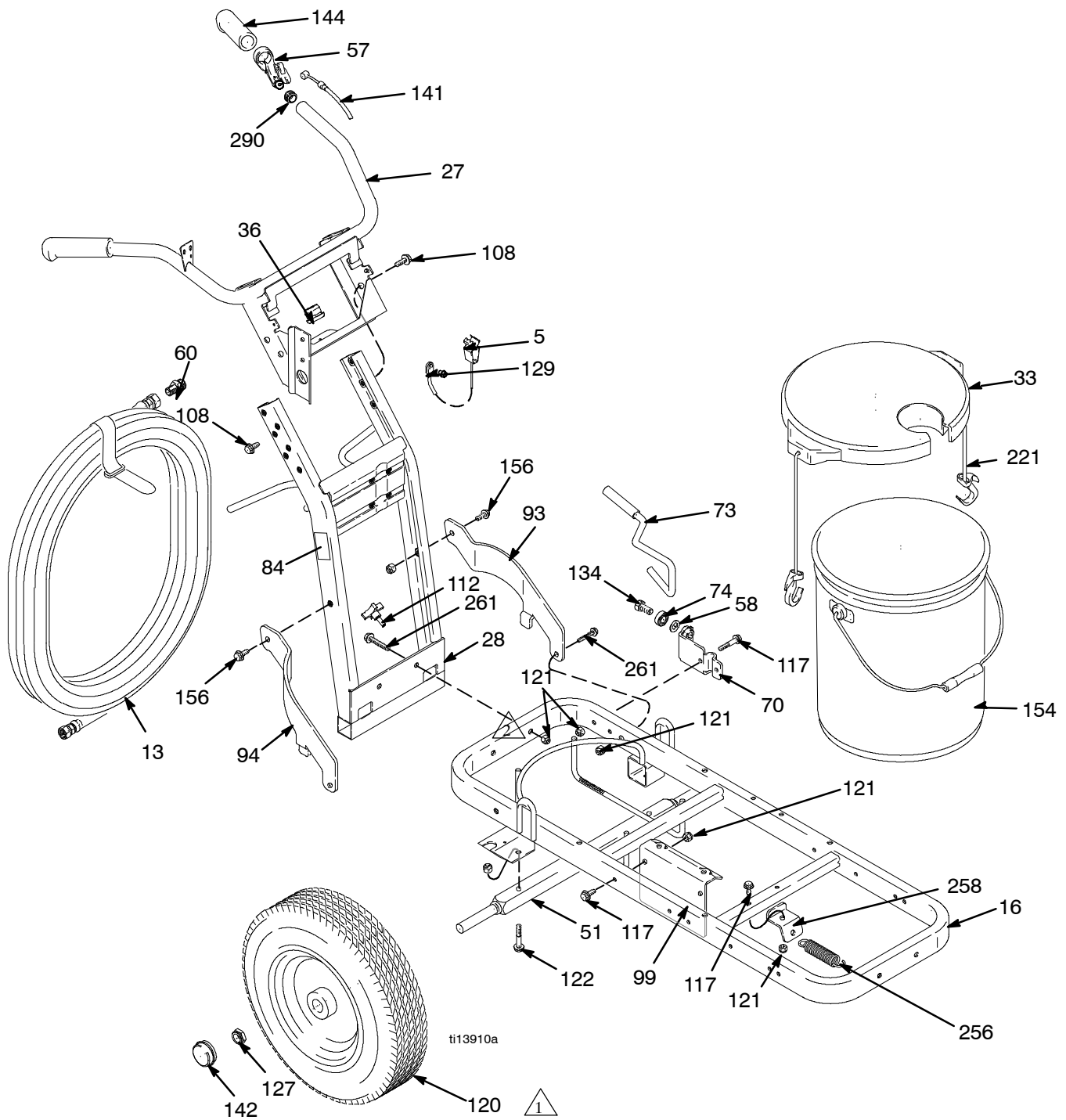


Parts Page 28



ti13917a

Parts - LineLazer IV 130HS



Parts - LineLazer IV 130HS

Ref. No.	Part No.	Description	Qty.	Ref. No.	Part No.	Description	Qty.
5	237686	CLAMP, grounding assy	1	112	111145	KNOB, pronged	2
13	245225	HOSE, 3/8 in. X 50 ft	1	117	110837	SCREW, flange, hex	10
16	287623	FRAME, linestriper	1	120	255162	WHEEL, pneumatic	2
27	287417	HANDLE	1	121	111040	NUT, lock, insert, nylock, 5/16	10
28	287622	SUPPORT, handle, painted	1	122	111194	SCREW, cap flange hd	2
33		COVER, pail		127	112405	NUT, lock	4
	240926	No. 221 (Model 257780)	1	129	112798	SCREW	1
	287567	includes 221 (Model 287025)	1	134	113961	SCREW, cap, hex hd	1
36	115642	BUSHING, strain relief	1	141	241445	CABLE, caster	1
51	193405	AXLE	1	142	114648	CAP, dust	3
57	194310	LEVER, actuator	1	144	114659	GRIP, handle	2
58	195134	SPACER, ball guide	1	154	115077	PAIL, plastic (Model 287025)	1
60	196176	ADAPTER, nipple	1	156	112395	SCREW, cap, flng hd	2
70	198891	BRACKET, mounting	1	221	119771	STRAP, cover	2
73	198930	ROD, brake	1	256	119696	SPRING, extension	1
74	198931	BEARING	1	258	15F441	BRACKET, frame	1
84▲	15F638	LABEL, warning, fire and skin	1	261	116780	SCREW, hex hd	4
93	15F577	BRACE, left, painted	1	290	120151	PLUG, tube	2
94	15F576	BRACE, right, painted	1				
99	15F425	BRACKET, reservoir	1				
108	112395	SCREW, cap	2				
109	102478	STRAP, wiring tie (not shown)	6				

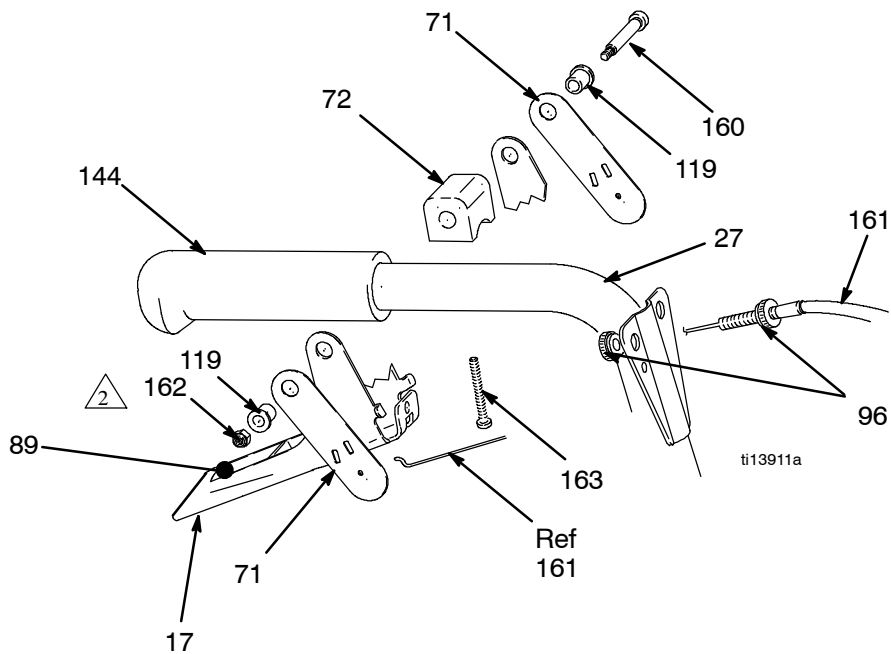
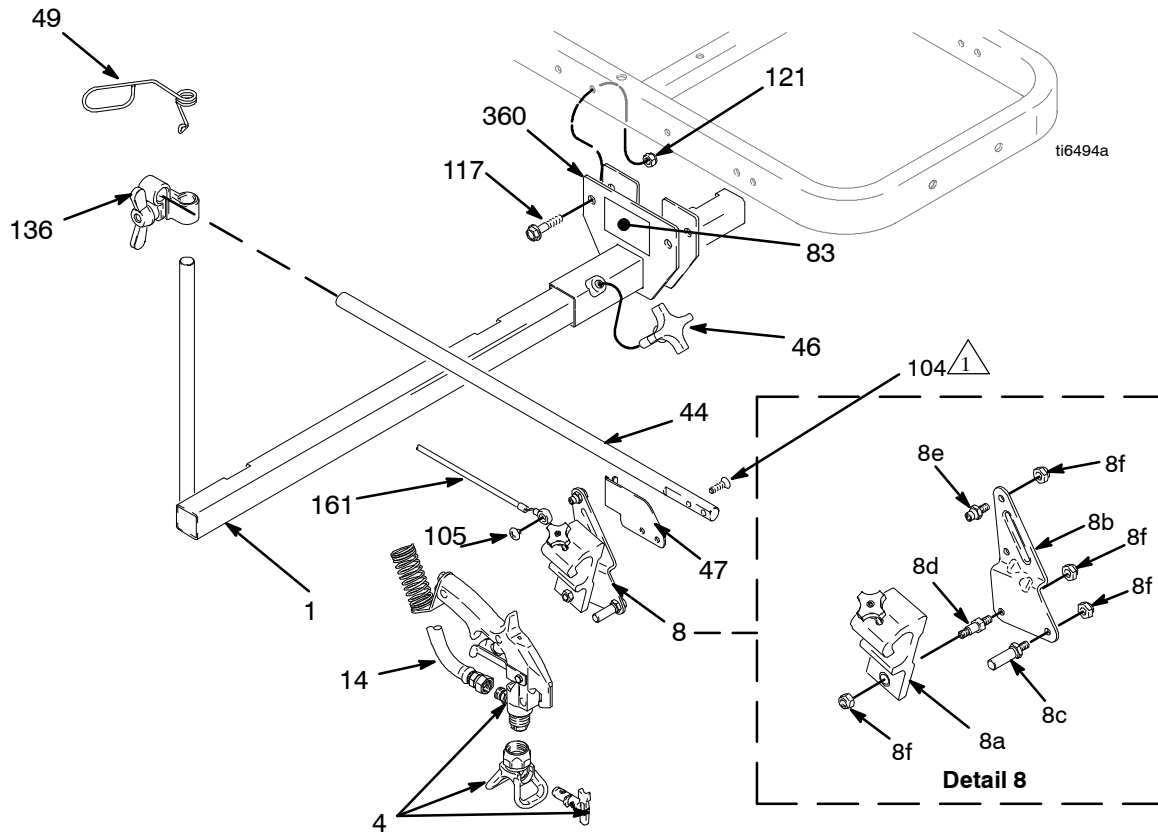
▲ Replacement warning labels may be ordered free of charge

Notes

1 Maintain tire pressure at 28-32 psi

2 Torque to 17-23 ft-lb

Parts - LineLazer IV 130Hs



Parts - LineLazer IV 130HS

Ref. No.	Part No.	Description	Qty.	Ref. No.	Part No.	Description	Qty.
1	224052	BRACKET, support gun	1	83▲	15F637	LABEL, skin injection	1
4	248157	GUN, flex, basic, includes guard & tip	1	89▲	15A644	LABEL, trigger	1
8	287570	KIT, holder, gun	1	96	15F624	NUT, cable, gun	2
8a	287569	HOLDER, gun	1	104	119647	SCREW, cap, socket, flthd	2
8b	15F214	LEVER, actuator	1	105	119648	SCREW, mach truss hd, cross recess	1
8c	15F209	STUD, pull, trigger	1	109	102478	STRAP, wiring tie	6
8d	15F210	STUD, pivot	1	117	110837	SCREW, flange, hex	2
8e	15F211	STUD, cable	1	119	111017	BEARING, flange	2
8f	102040	NUT, lock	4	121	111040	NUT, lock	2
14	245798	HOSE, 1/4 x 7 ft	11	136	287566	KIT, clamp	1
17	245733	KIT, trigger handle repair	1	144	114659	GRIP, handle	2
27	287417	HANDLE	1	160	116941	SCREW, shoulder, socket head	1
44	15F212	ARM, support	1	161	287696	CABLE, includes 96	1
46	111145	KNOB, pronged	1	162	116969	NUT, lock	2
47	15F213	BRACKET, cable	1	163	116973	SCREW, #10 taptite phil	1
49	188135	GUIDE, cable	1	360	15F389	BRACKET, gun arm	1
71	198895	PLATE, lever, pivot	2				
72	198896	BLOCK, mounting (mach)	1				

▲ Replacement warning labels may be ordered free of charge

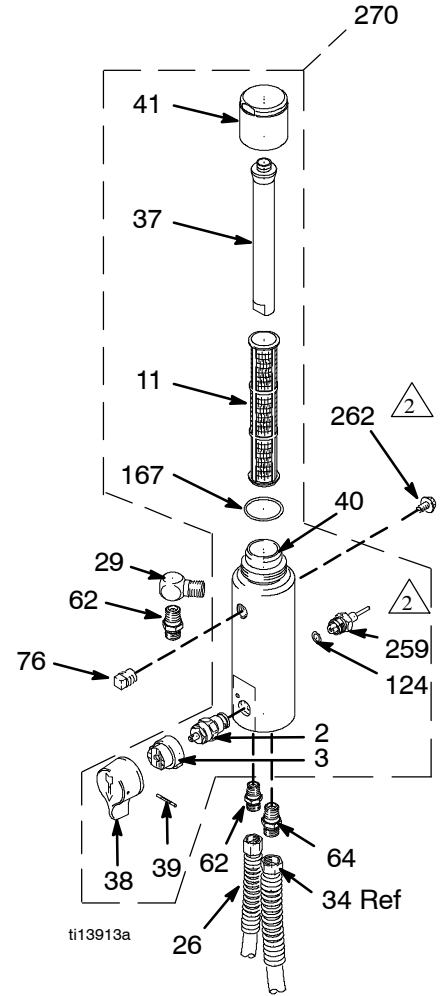
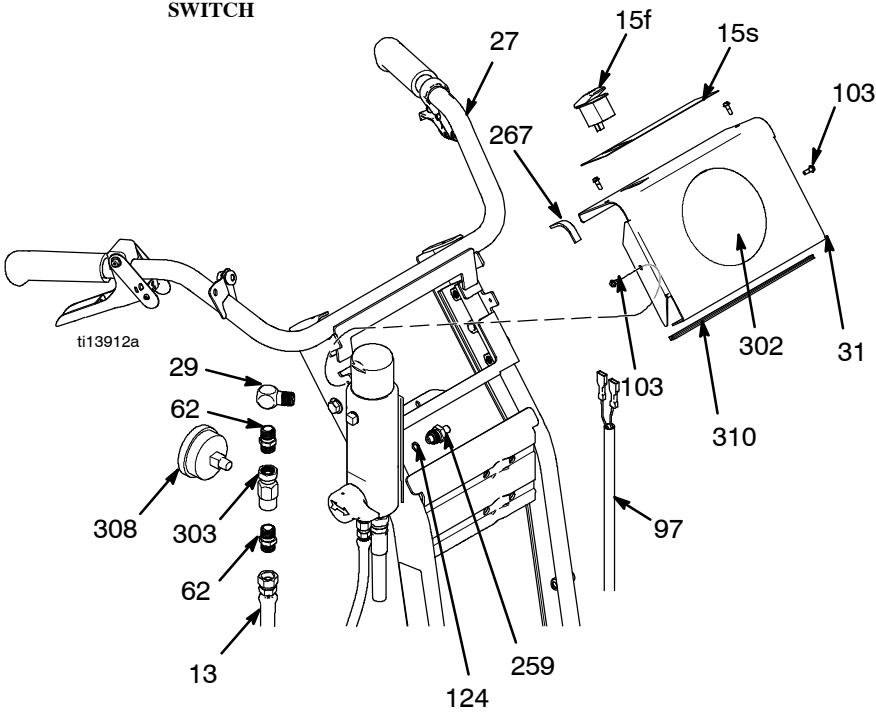
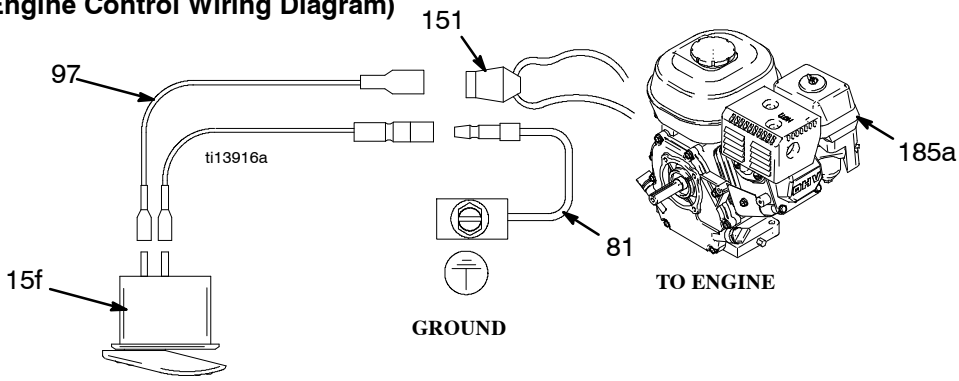
Notes

1 Torque to 90-110 in-lb

2 Torque to 10-20 in-lb

Parts - LineLazer IV 130Hs

(Engine Control Wiring Diagram)



Parts - LineLazer IV 130HS

Ref. No.	Part No.	Description	Qty.	Ref. No.	Part No.	Description	Qty.
2	239914	VALVE, drain	1	64	196181	FITTING, nipple 1/4 in. x 1/4 in.	1
3	224807	BASE, valve	1	76	104813	PLUG, pipe	1
11	244067	FILTER, fluid	1	97	112854	HARNESS, wire	1
13	245225	HOSE, 3/8 in. x 50 ft	1	103	117501	SCREW	1
15f	114954	SWITCH, rocker	1	124	111457	O-RING	1
15s▲	15Y608	LABEL, control	1	167	117285	O-RING	1
26	245226	HOSE, coupled, 3/8 in.	1	259	15Y462	PLUG, filter	1
27	287417	HANDLE	1	262	111801	SCREW, cap, hex	2
29	196179	FITTING, elbow, street	2	267	15F814	GASKET, handle	1
31	15Y465	COVER, control	1	270	24B749	KIT, repair, filter, includes 2, 3, 11, 37 38, 39, 40, 41, 124, 167, 259	1
34	287206	HOSE, suction/drain	1	302	15Y598	LABEL, brand	1
37	15C766	TUBE, diffuser	1	303	243683	ADAPTER (Model 257780)	1
38	15C780	HANDLE	1	308	115523	GAUGE (Model 257780)	1
39	15C972	PIN, grooved	1	310	123116	TRIM, rubber	1
40	15H561	MANIFOLD, filter, 3/8 npt	1				
41	287285	KIT, repair, filter cap, includes 37, 167	1				
62	196178	ADAPTER, nipple 3/8 in. x 3/8 in.	3				

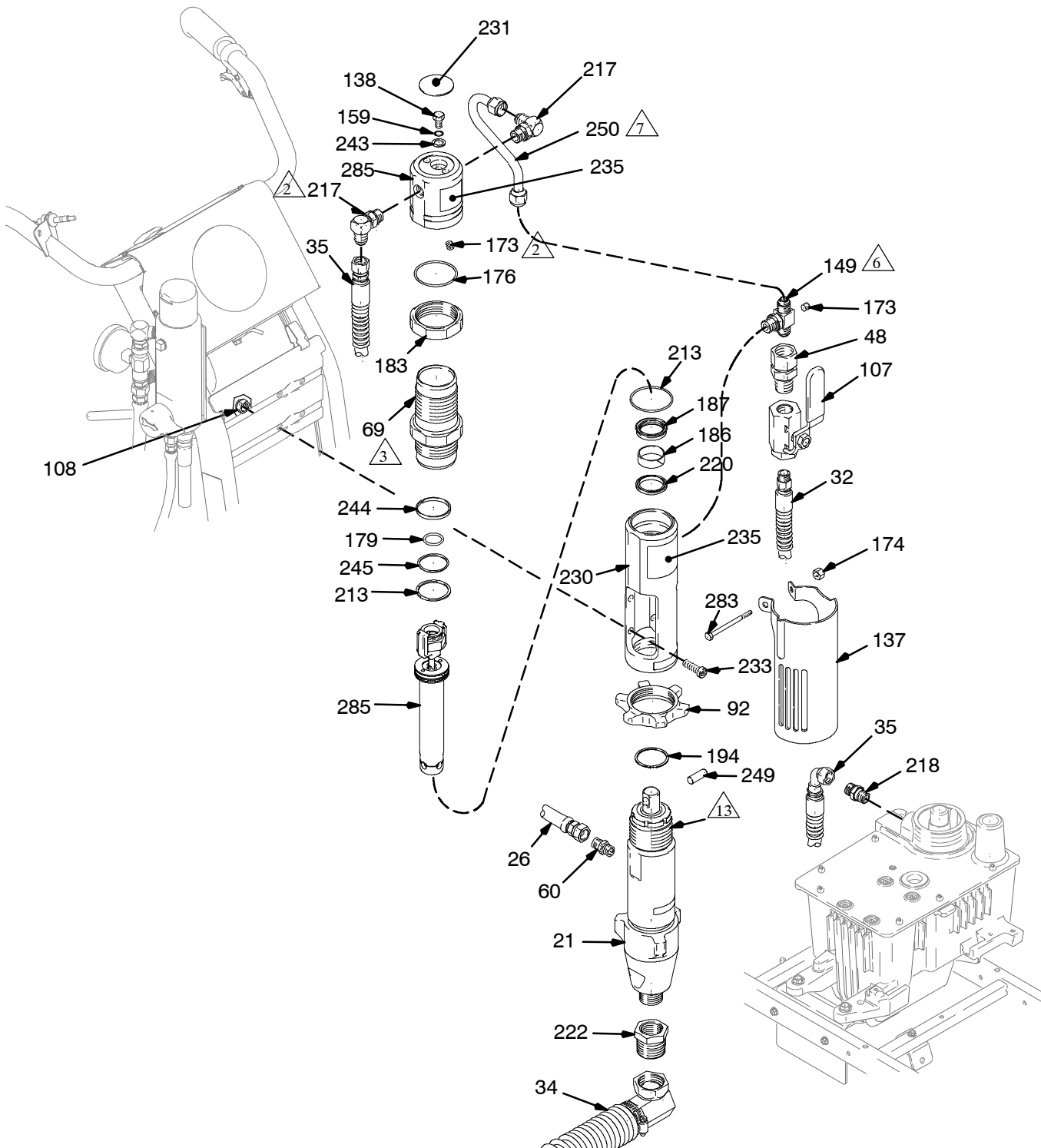
▲ Replacement warning labels may be ordered free of charge

Notes

① Torque to 115-135 in-lb

② Torque to 130-150 in-lb

Parts - LineLazer IV 130Hs



ti13914a

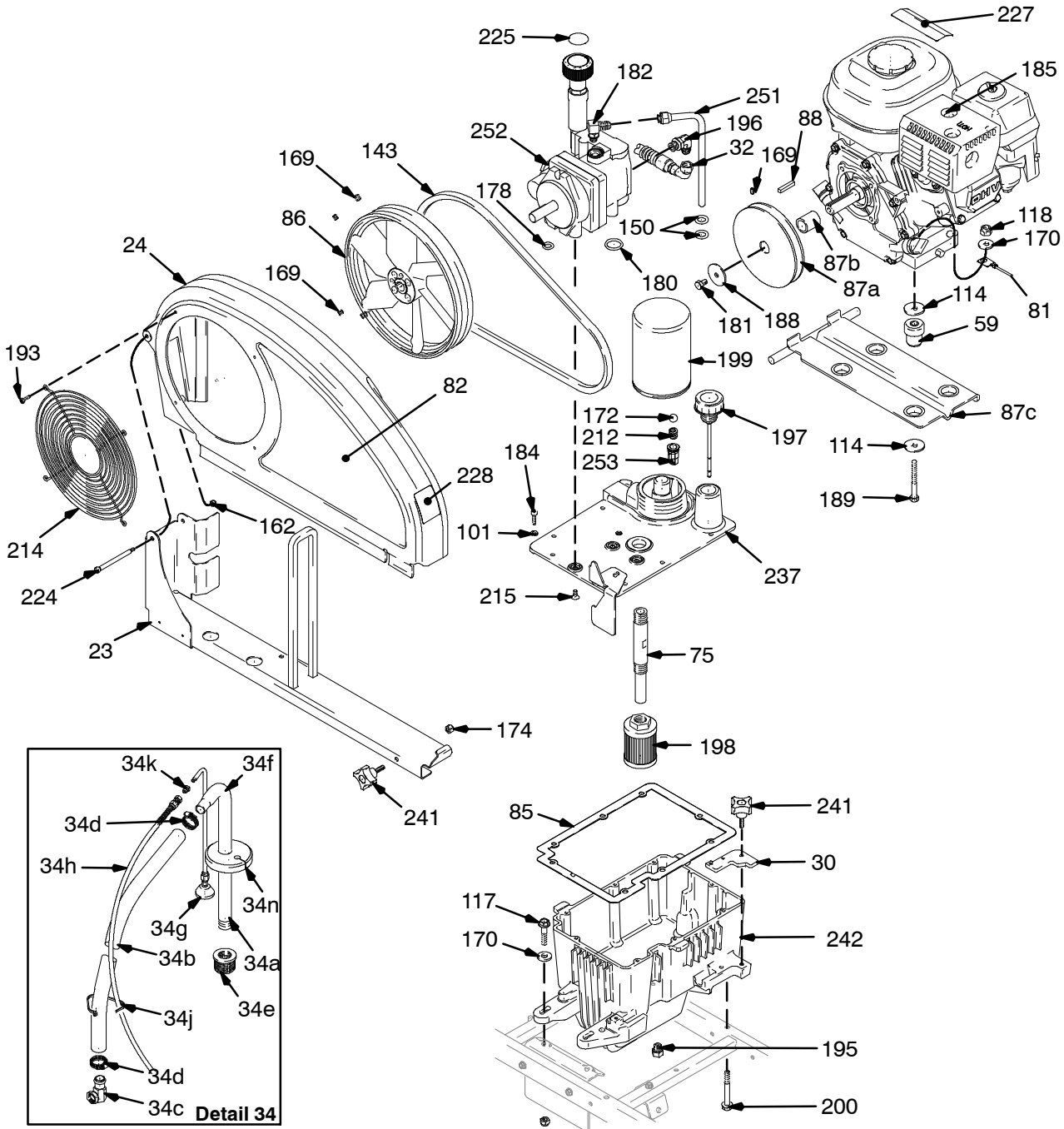
Parts - LineLazer IV 130HS

Ref. No.	Part No.	Description	Qty.	Ref. No.	Part No.	Description	Qty.
21	24B748	PUMP, displacement Manual 311845	1	187	112561	PACKING, block	1
26	245747	HOSE, coupled, 3/8 in.	1	194	116551	RING, retaining	1
32	287175	HOSE, hydraulic, supply	1	213	117283	O-RING	1
34	287206	HOSE, suction/drain	1	217	117607	FITTING, elbow, std thd	2
35	287176	HOSE, hydraulic, return	1	218	117608	FITTING, nipple, straight	1
48	117328	FITTING, nipple, straight	1	220	117739	WIPER, rod	1
60	196178	ADAPTER, nipple 3/8 in. X 3/8 in.	1	222	15Y463	BUSHING	1
69	246176	SLEEVE, hydraulic cylinder, includes 213	1	230	15H953	MANIFOLD, adapter	1
92	193031	NUT, retaining	1	231	15B063	LABEL,	1
107	117441	VALVE, ball	1	233	107210	SCREW, cap, socket head	4
108	101566	NUT, lock	4	235	15B804	LABEL, Graco Logo	1
137	15F911	GUARD, pump rod	1	243	178179	WASHER, sealing	1
138	106276	SCREW, cap, hex hd	1	244	178207	BEARING, piston	1
149	119841	FITTING, tee, branch, str thd	1	245	178226	SEAL, piston	1
159	155685	O-RING	1	249	197443	PIN, pump	1
173	100139	PLUG, pipe	1	250	15F519	TUBE, hydraulic, supply	1
174	102040	NUT, lock, hex	2	283	110982	SCREW, cap, hex head	1
176	105765	O-RING	1	284	288758	KIT, repair, hydraulic motor	1
179	108014	O-RING	1	285	288735	KIT, repair, trip rod, piston	1
183	15A726	NUT, jam	1	Kits			
186	112342	BEARING, rod	1		246174,	KIT, repair, seal, hydraulic, includes 176, 186, 213, 220, 244, 245	

Notes

- 1 Torque to 75 ft-lb
- 2 Torque to 85-95 in-lb
- 3 Torque to 150 ft-lb
- 4 Torque to 54-56 in-lb
- 5 Torque to 40-44 ft-lb
- 6 Torque to 40 ft-lb
- 7 Torque to 25 ft-lb

Parts - LineLazer IV 130Hs

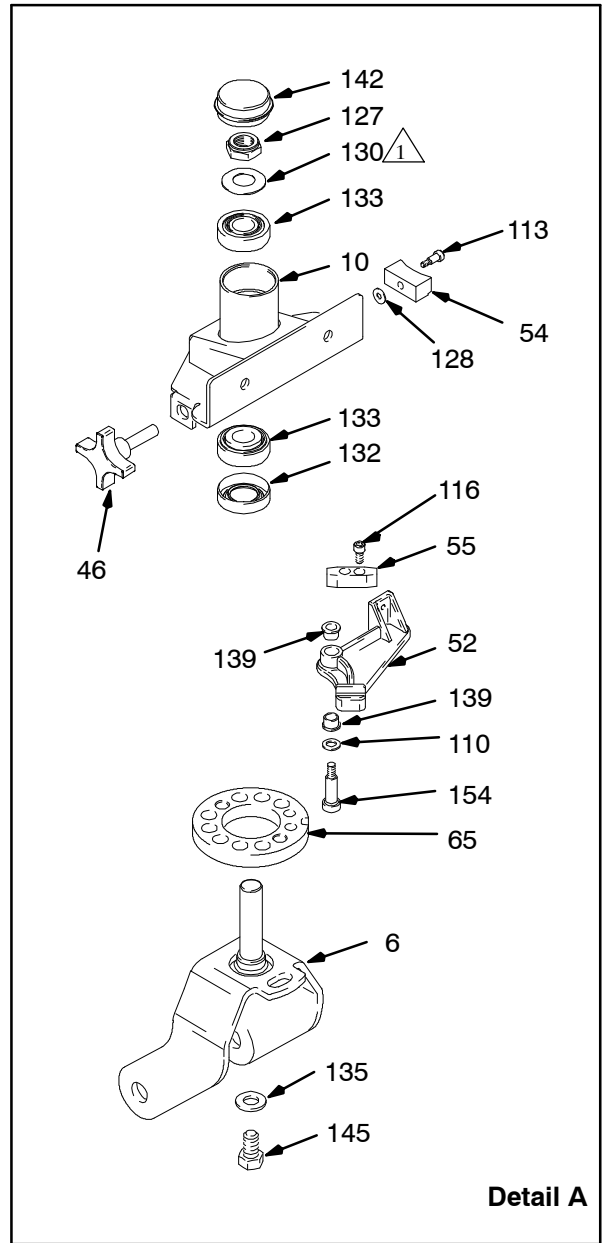
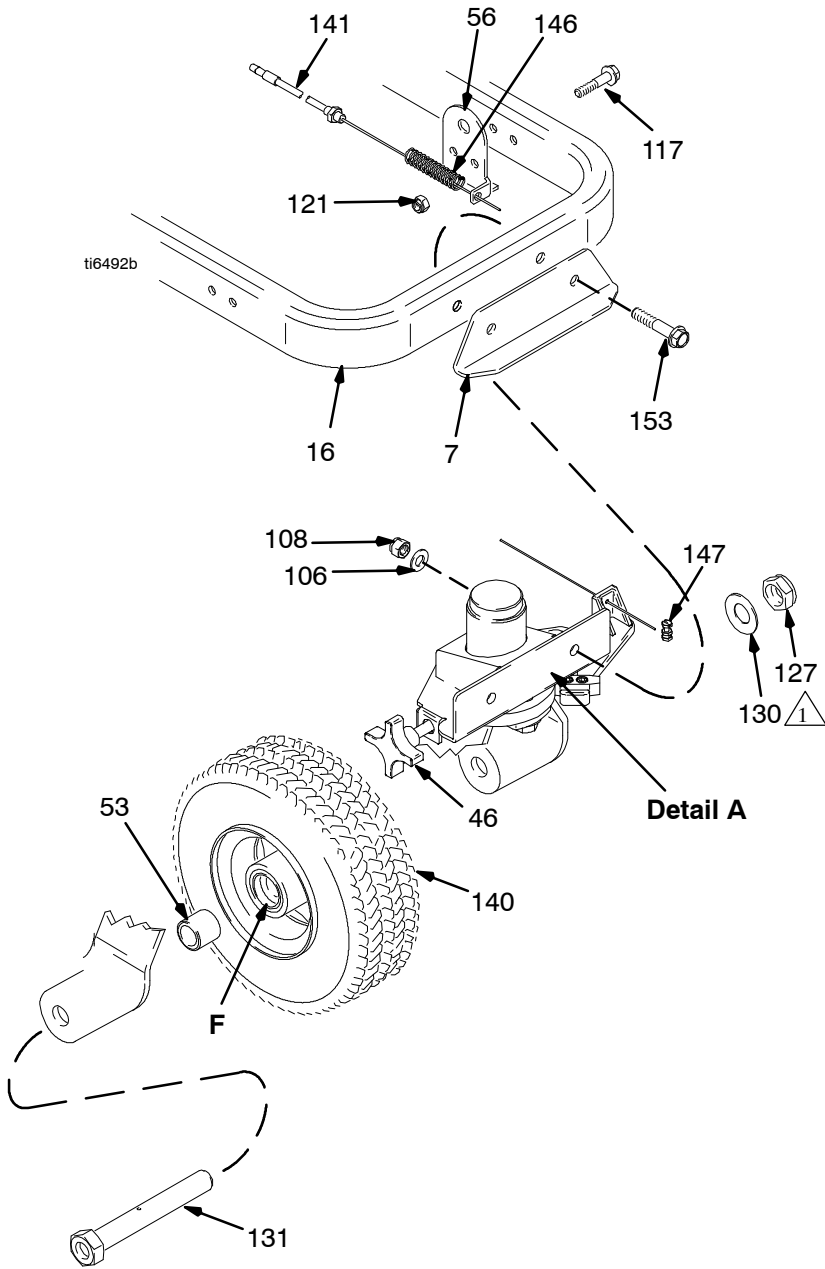


Parts - LineLazer IV 130HS

Ref. No.	Part No.	Description	Qty.	Ref. No.	Part No.	Description	Qty.
23	288261	RAIL, belt	1	172	100084	BALL, metallic	1
24	248973	GUARD, belt, includes: 162, 193, 214, 224, and 228	1	174	102040	NUT, lock	1
30	15E476	BRACKET, retainer, motor	1	178	107188	O-RING	1
32	287175	HOSE, hydraulic supply	1	180	156401	O-RING	1
34	287206	HOSE, suction/drain	1	181	108842	SCREW, cap, hex head	1
34a	15F149	TUBE, suction	1	182	110792	ELBOW, male, 90 degree	1
34b	194306	HOSE, fluid	1	184	112166	SCREW, cap, sch	15
34c	198119	ELBOW, barbed	1	185	248943	KIT, engine, gas, 5.5 hp, Honda, includes: 59, 87, 88, 98, 114, 118, 169, 170, 181, 185a, 188, 189, 227 and 234	1
34d	101818	CLAMP, hose	1				
34e	181072	STRAINER, inlet	1				
34f	198601	TUBE, drain	1	185a	120590	ENGINE, gas, 4.0 hp, Honda	1
34g	241920	DEFLECTOR, threaded	1	188	112717	WASHER,	1
34h	248008	HOSE, coupled 1/4 in. x 4 ft	1	189	113664	SCREW, flange, hex	4
34j	114958	STRAP, tie	7	193	115477	SCREW, mach, torx pan hd	4
34k	196180	BUSHING	1	195	101754	PLUG, hex head, hydraulic	1
34m	195119	LABEL, warning (not shown)	1	196	116793	FITTING, elbow, hydraulic	1
34n	15F513	GASKET, pail	1	197	116915	CAP, breather filler	1
59	15E888	DAMPENER, motor mount	4	198	116919	FILTER, hydraulic, suction	1
75	15E587	TUBE, suction	1	199	246173	FILTER, oil, spin on	1
81	240997	CONDUCTOR, ground	1	200	120981	SCREW, hex washhd	2
82▲	15Y464	LABEL, brand 130HS		212	116967	SPRING, compression	1
85	120604	GASKET, reservoir	1	214	117284	GRILL, fan guard	1
86	15E410	PULLEY, fan	1	215	117471	SCREW, 1/4-20 flat hd mach	4
87a	116908	PULLEY, 5.50 diameter	1	224	119434	SCREW, shoulder, socket head	1
87b	15E759	SPACER, shaft, engine	1	225	15A464	LABEL, control	1
87c	15F485	BRACKET, engine mount	1	227▲	194126	LABEL, warning	1
88	117632	KEY, square, 3/16 X 1.25	1	228▲	198492	LABEL, warning	1
101	100016	WASHER	8	237	15M057	COVER, reservoir, GH130 LL	1
114	108851	WASHER, plain	8	241	15D862	NUT, hand	2
117	110837	SCREW, flange, hex	10	242	15J513	TANK, reservoir	1
118	110838	NUT, lock	4	251	246167	TUBE, hydraulic, case drain, includes: 150	1
143	119433	BELT, vee, gripnotch	1				
150	154594	O-RING	2	252	288733	PUMP, hydraulic	1
151	114956	TERMINAL, wire tap, insulated	1	253	198841	RETAINER, ball, press bypass	1
162	116969	NUT, lock	2				
169	100002	SCREW, set, sch	3				
170	100023	WASHER, flat	6				

▲ Replacement warning labels may be ordered free of charge

Parts - LineLazer IV 130Hs

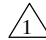


Parts - LineLazer IV 130HS

Ref. No.	Part No.	Description	Qty.	Ref. No.	Part No.	Description	Qty.
6	240942	SHAFT, fork	1	128	112776	WASHER, plain	1
7	240991	BRACKET, caster, front	1	130	112825	SPRING, Belleville	3
10*	15G952	BRACKET, hub	1	131	113471	SCREW, cap, hex hd	1
16	287623	FRAME, linestriper, painted	1	132*	113484	SEAL, grease	1
46	181818	KNOB, pronged	1	133*	113485	BEARING, cup/cone	2
52	193528	ARM, detent	1	135	113962	WASHER, hardened	1
53	193658	SPACER, seal	2	139	114548	BEARING, bronze	2
54	193661	JAW	1	140	114549	WHEEL, pneumatic	1
55	193662	STOP, wedge	1	141	241445	CABLE	1
56	15F910	BRACKET, cable	1	142	114648	CAP, dust	3
65	198606	DISK, adjuster	1	145	114681	SCREW, cap, hex hd	1
106	100731	WASHER	2	146	114682	SPRING, compression	1
108	101566	NUT, lock	2	147	114802	STOP, wire	1
110	15J603	WASHER, plain	1	153	114982	SCREW, cap, flng hd	2
113	108483	SCREW, shoulder, soc hd	1	154*	120476	BOLT	1
116	110754	SCREW, cap, soc hd	2				
117	110837	SCREW, flange, hex	10				
121	111040	NUT, lock	2				
127	112405	NUT, lock	4				

* Included in 240940 Bracket Repair Kit; purchase separately

Note

 Install washers (130) concave surface to inside.

Technical Data

Honda GX120 Engine
 Power Rating @ 3600 rpm
 ANSI 4.0 Horsepower
 Maximum working pressure 3300 psi
 (227 bar, 22.7 MPa)
 Noise Level
 Sound power 103 dBa
 per ISO 3744
 Sound pressure 88 dBa
 measured at 3.1 feet (1 m)
 Vibration Level*
 Left Hand 2.90 m/sec²
 Right Hand 2.83 m/sec²
 *Vibration measured per ISO 5349 based on 8 hr daily exposure.
 Cycles/gallon (liter) 104 (27.5)

Maximum delivery 1.3 gpm (5.9 lpm)
 Maximum tip size
 1 gun with 0.037 in. tip
 Inlet paint strainer 16 mesh (1190 micron)
 stainless steel screen, reusable
 Outlet paint filter 60 mesh (250 micron)
 stainless steel screen, reusable
 Pump inlet size 1 in. npsm(m)
 Fluid outlet size 3/8 npt(f)
 Hydraulic reservoir capacity ... 1.25 gallon (4.73 liters)
 Hydraulic pressure 1510 psi (104 bar)
 Weight (dry, without packaging) 242 lb (110 kg)
 Height 40 in. (101.6 cm)
 Length 65 in. (165.1 cm)
 Width 32 in. (81.3 cm)
 Wetted parts ... PTFE, Nylon, polyurethane, V-Max™
 UHMWPE polyethylene, fluoroelastomer, acetal,
 leather, tungsten carbide, stainless steel, chrome
 plating, nickel-plated carbon steel, ceramic,

Accessories

Must be purchased separately.

GRACO-APPROVED HYDRAULIC OIL

169236 5 Gallons (19 liters)
 207428 1 Gallon (3.8 liters)

Graco Standard Warranty

Graco warrants all equipment manufactured by Graco and bearing its name to be free from defects in material and workmanship on the date of sale to the original purchaser for use. With the exception of any special, extended, or limited warranty published by Graco, Graco will, for a period of twelve months from the date of sale, repair or replace any part of the equipment determined by Graco to be defective. This warranty applies only when the equipment is installed, operated and maintained in accordance with Graco's written recommendations.

This warranty does not cover, and Graco shall not be liable for general wear and tear, or any malfunction, damage or wear caused by faulty installation, misapplication, abrasion, corrosion, inadequate or improper maintenance, negligence, accident, tampering, or substitution of non-Graco component parts. Nor shall Graco be liable for malfunction, damage or wear caused by the incompatibility of Graco equipment with structures, accessories, equipment or materials not supplied by Graco, or the improper design, manufacture, installation, operation or maintenance of structures, accessories, equipment or materials not supplied by Graco.

This warranty is conditioned upon the prepaid return of the equipment claimed to be defective to an authorized Graco distributor for verification of the claimed defect. If the claimed defect is verified, Graco will repair or replace free of charge any defective parts. The equipment will be returned to the original purchaser transportation prepaid. If inspection of the equipment does not disclose any defect in material or workmanship, repairs will be made at a reasonable charge, which charges may include the costs of parts, labor, and transportation.

THIS WARRANTY IS EXCLUSIVE, AND IS IN LIEU OF ANY OTHER WARRANTIES, EXPRESS OR IMPLIED, INCLUDING BUT NOT LIMITED TO WARRANTY OF MERCHANTABILITY OR WARRANTY OF FITNESS FOR A PARTICULAR PURPOSE.

Graco's sole obligation and buyer's sole remedy for any breach of warranty shall be as set forth above. The buyer agrees that no other remedy (including, but not limited to, incidental or consequential damages for lost profits, lost sales, injury to person or property, or any other incidental or consequential loss) shall be available. Any action for breach of warranty must be brought within two (2) years of the date of sale.

Graco makes no warranty, and disclaims all implied warranties of merchantability and fitness for a particular purpose in connection with accessories, equipment, materials or components sold but not manufactured by Graco. These items sold, but not manufactured by Graco (such as electric motors, switches, hose, etc.), are subject to the warranty, if any, of their manufacturer. Graco will provide purchaser with reasonable assistance in making any claim for breach of these warranties.

In no event will Graco be liable for indirect, incidental, special or consequential damages resulting from Graco supplying equipment hereunder, or the furnishing, performance, or use of any products or other goods sold hereto, whether due to a breach of contract, breach of warranty, the negligence of Graco, or otherwise.

FOR GRACO CANADA CUSTOMERS

The parties acknowledge that they have required that the present document, as well as all documents, notices and legal proceedings entered into, given or instituted pursuant hereto or relating directly or indirectly hereto, be drawn up in English. Les parties reconnaissent avoir convenu que la rédaction du présente document sera en Anglais, ainsi que tous documents, avis et procédures judiciaires exécutés, donnés ou intentés à la suite de ou en rapport, directement ou indirectement, avec les procédures concernées.

ADDITIONAL WARRANTY COVERAGE

Graco does provide extended warranty and wear warranty for products described in the "Graco Contractor Equipment Warranty Program".

Graco Information

For the latest information about Graco products, visit www.graco.com.

TO PLACE AN ORDER, contact your Graco distributor, or call this number to identify the distributor closest to you:
1-800-690-2894 Toll Free

*All written and visual data contained in this document reflects the latest product information available at the time of publication.
Graco reserves the right to make changes at any time without notice.*

Original instructions. This manual contains English. MM 313776

Graco Headquarters: Minneapolis
International Offices: Belgium, China, Japan, Korea
GRACO INC. P.O. BOX 1441 MINNEAPOLIS, MN 55440-1441
Copyright 2005, Graco Inc. is registered to ISO 9001
www.graco.com
Rev 11/2010