

QUADGUARD[®] SYSTEM

THE WORLDWIDE STANDARD IN CRASH CUSHIONS



OVERVIEW

The new family of QuadGuard crash cushions offers the latest technology for shielding hazards 610 to 3048 mm (2' to 10'). Each QuadGuard System consists of crushable, energy-absorbing cartridges surrounded by a framework of Energy's exclusive steel Quad-Beam™ panels. These new crash cushions redefine NCHRP 350, Test Level 3 performance for redirective, non-gating attenuators. The QuadGuard Systems have successfully passed the complete NCHRP 350, Test Level 3 test matrix with both the light car and high center-of-gravity pickup truck at speeds up to 100 km/h (62 mph) at angles up to 20°. Higher speed units are available. During head-on impacts, the QuadGuard Systems telescope rearward and crush the cartridges to absorb the energy of impact. When impacted from the side, the QuadGuard Systems safely redirect the errant vehicle back toward its original travel path without allowing gating.

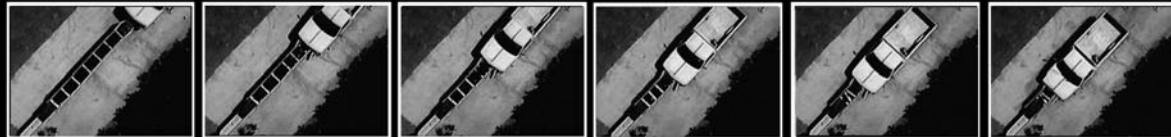


FEATURES AND BENEFITS

- ▶ Compact, modular design (one to twelve bays) accommodates speeds from 40 km/h (25 mph) to 120 km/h (75 mph).
- ▶ Quad-Beam panels provide 30% higher beam strength than three beam.
- ▶ "Staged" cartridge design safely decelerates both light cars and heavier, high center-of-gravity vehicles.
- ▶ Monorail base eliminates the need for anchoring chains and tension cable — easier installation!
- ▶ Self-supporting nose — no legs mean reduced installation time.
- ▶ Simplified backups — choose from Tension Strut or Concrete.
- ▶ High efficiency — 80% reusability after most design impacts.
- ▶ Fully tested transition panels.

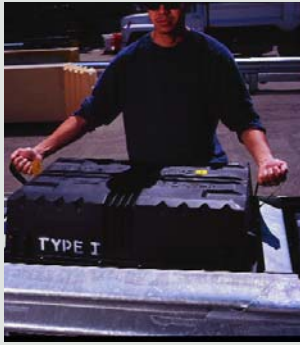


SAVING LIVES BY DESIGN



ENERGY ABSORPTION
SYSTEMS, INC.

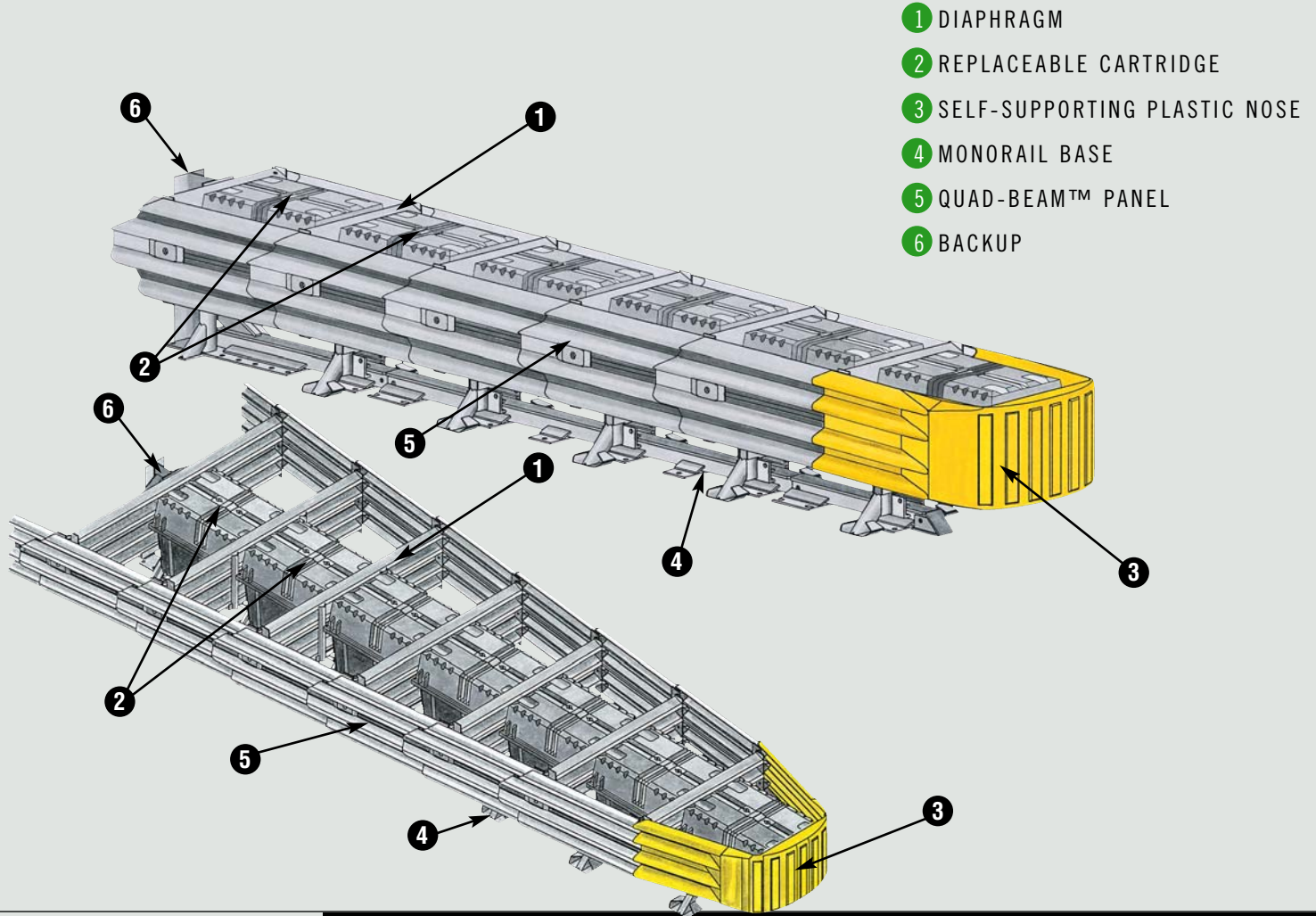
QUICK & EASY REFURBISHMENT



QuadGuard Systems offer high efficiency 80% reusability, allow for quick refurbishment and keep repair costs low. After a head-on impact, typically only the cartridges and Plastic nose are expended. The cartridges contain the debris, further reducing refurbishment time.

SPECIFICATIONS

Minimum Width at Backup	610.0 mm	(2')
Maximum Width at Backup	3048.0 mm	(10')
Weight (typical 6-bay unit)	1020.0 kg	(2255lb.)
Length (typical 6-bay unit)	6.4 m	(21')



- 1 DIAPHRAGM
- 2 REPLACEABLE CARTRIDGE
- 3 SELF-SUPPORTING PLASTIC NOSE
- 4 MONORAIL BASE
- 5 QUAD-BEAM™ PANEL
- 6 BACKUP



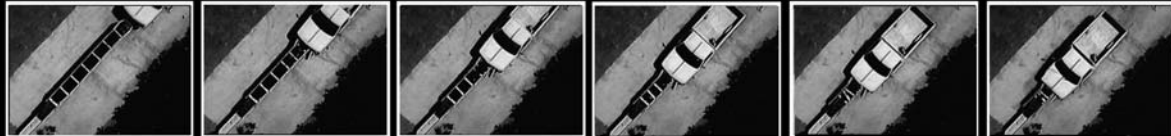
WWW.QUIXTRANS.COM



ENERGY ABSORPTION
SYSTEMS, INC.

35 East Wacker Drive • Chicago, IL 60601
Tel: (312) 467-6750 • Fax: (312) 467-9625
www.energyabsorption.com

SAVING LIVES BY DESIGN



Distributed By:

General specifications for the QuadGuard System are subject to change without notice to reflect improvements and upgrades. Additional information is available in the Product Manual for this system. Contact Energy Absorption Systems for details.