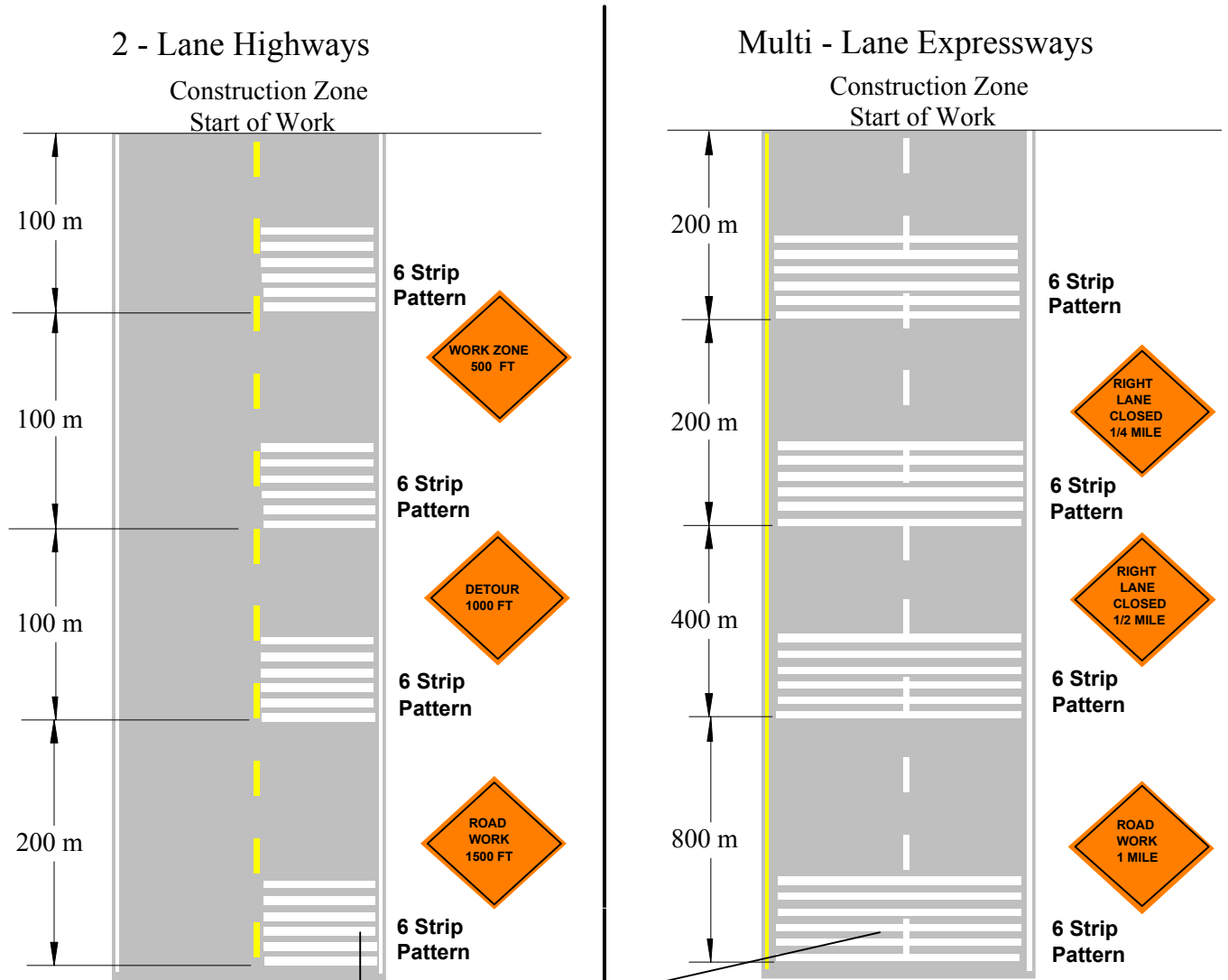


# SUGGESTED LAYOUT DETAILS

## TEMPORARY RUMBLE STRIPS



**Recommended Spacing:**  
 30 to 40 mph – 12 inches  
 40 to 55 mph – 24 inches  
 55 + mph - 36 inches  
 Based on 6" wide rumble strip

**Note:** Signing and layout shown is for example purposes only. All construction zone and layouts should conform to the Manual on Uniform Traffic Control devices or applicable DOT agency specifications.

### **RUMBLER - Preformed Rumble Strips** **Reflective and Non-Reflective** **Permanent and Temporary Applications**



Swarco Industries Inc.  
 P.O. Box 89  
 Columbia, TN 38402-0089  
 USA

phone: 931-388-5900  
 fax: 931-388-4039  
 e-mail: office.industries@swarco.com  
 website: www.swarco.com