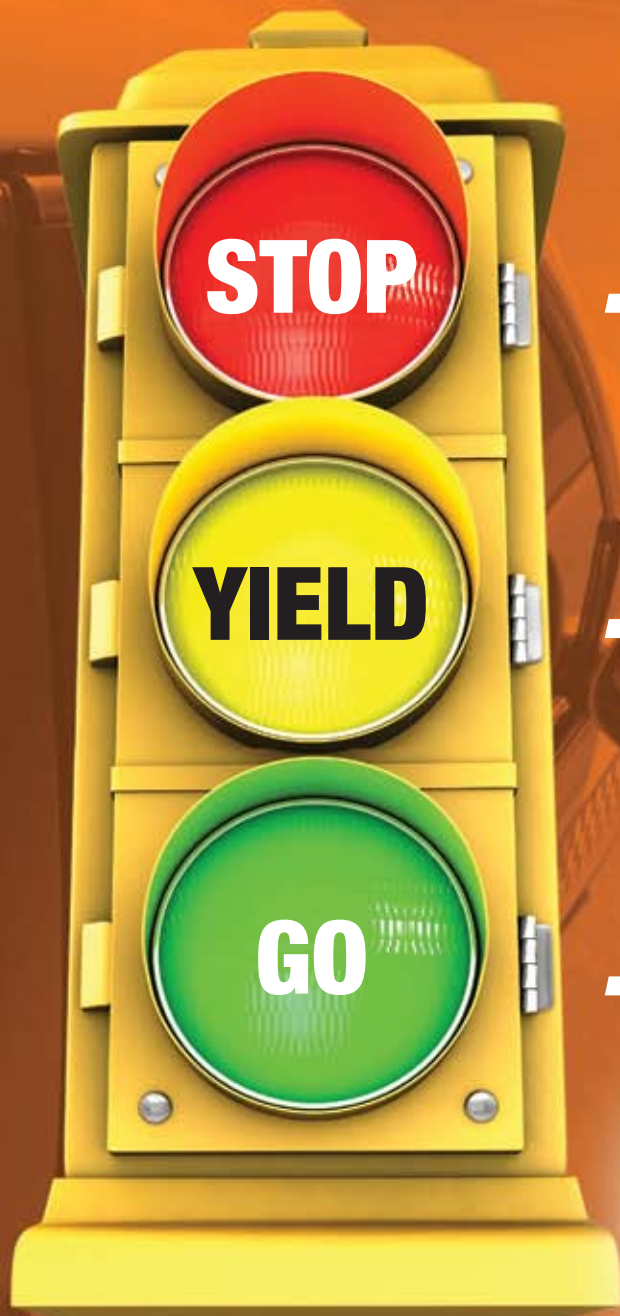


# SNAP'n SAFE™

**BREAKAWAY SIGN POST COUPLERS**

***Our Goal – Safe Roads and Saving You Time and Money***



***...wasting time  
& money!***

***...to new advanced  
technology!***

***...to SNAP'n SAFE™  
Breakaways***



***Breakaway Couplers for Square, Round & U-Channel Posts***



**DESIGNOVATIONS, INC.**  
7339 WILDWOOD ROAD • STILLMAN VALLEY, IL 61084

PHONE: 888-868-6588 • FAX: 815-645-2389  
EMAIL: [sales@designovations.com](mailto:sales@designovations.com) • [www.designovations.com](http://www.designovations.com)

# SNAP'n SAFE™

## BREAKAWAY SIGN POST COUPLERS



- Repair sign posts in half the time with one person
- Use existing sign posts and anchors
- No special tools needed
- Less work crew exposure to traffic
- No concrete boring - surface mounts



PATENT  
PENDING

### Don't let this happen!

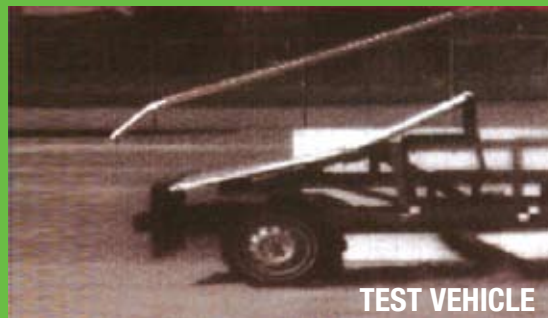


**No Breakaway Device.** High risk of occupant injury. At impact the signpost is forced into the windshields and roof of the vehicle.



After impact with no breakaway device, the anchor must be replaced. This translates into more time and expense.

**SNAP'n SAFE™** reduces cost and is designed for easy installation for all standard sign post configurations, square, round or U-channel



TEST VEHICLE

With the SNAP'n SAFE™ breakaway device there is little risk of occupant injury. At vehicle impact the sign post breaks away and does not strike the vehicles windshield or roof. Testing done at Texas A&M and University of Nebraska.



After impact with SNAP'n SAFE™ unit, the anchor has a plug end which can be easily removed and the anchor can be reused, saving time and money.



## NCHRP Report 350 Compliant

Designovations now offers new technology with the SNAP'n SAFE™ breakaway sign post couplers. Using a vehicle specified in the existing Report 350, this new technology meets and exceeds the more stringent damage levels contained in the updated NCHRP Report 350 specifications for ground mounted sign supports.



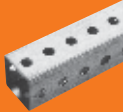
**DESIGNOVATIONS, INC.**  
7339 WILDWOOD ROAD • STILLMAN VALLEY, IL 61084

PHONE: 888-868-6588 • FAX: 815-645-2389

EMAIL: [sales@designovations.com](mailto:sales@designovations.com) • [www.designovations.com](http://www.designovations.com)



**SNAP'n SAFE™**  
Breakaway  
Square  
Sign Post Coupler



PATENT  
PENDING



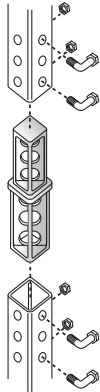
360°  
Shear  
Point

Made of cast gray iron, withstands winds of 120 mph.

Part No.	Wt.	Sign Post Size
S150	2.2 lbs.	1-1/2"
S175	2.8 lbs.	1-3/4"
S200	3.1 lbs.	2"
S225	5 lbs.	2-1/4"
S250	6 lbs.	2-1/2"

**EASY  
INSTALLATION:**  
(Hardware Included)

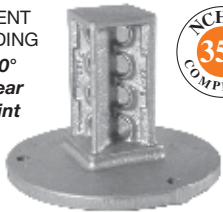
Simply insert SNAP'n SAFE Coupler in anchor and bottom of sign post and assemble with (4) bolts.



**SQUARE  
SURFACE MOUNT**

PATENT  
PENDING

360°  
Shear  
Point

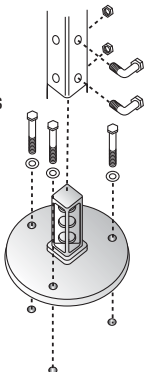


Made of cast gray iron, no concrete boring

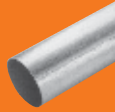
Part No.	Wt.	Sign Post Size
S175S	8 lbs.	1-3/4"
S200S	9 lbs.	2"
S250S	10 lbs.	2-1/2"

**EASY  
INSTALLATION:**  
(Hardware Included)

Simply drill (3) holes in concrete using the base as guide. Secure coupler to concrete with (3) bolts. Attach sign post with (2) corner bolts.



**SNAP'n SAFE™**  
Breakaway  
Round  
Sign Post Coupler



PATENT  
PENDING



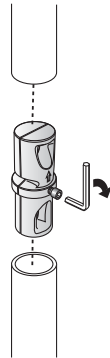
360°  
Shear  
Point

Made of cast gray iron, withstands winds of 120 mph.

Part No.	Wt.	Sign Post Size
S238R16	4.6 lbs.	16 Ga. Wall
S238R12	5 lbs.	12 Ga. Wall
S238R8	5.4 lbs.	8 Ga. Wall

**EASY  
INSTALLATION:**  
(Hardware Included)

Simply insert SNAP'n SAFE Coupler in anchor and bottom of sign post and tighten set screw.



**ROUND  
SURFACE MOUNT**

PATENT  
PENDING

360°  
Shear  
Point

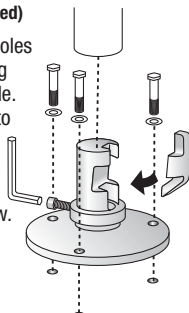


Made of cast gray iron, no concrete boring

Part No.	Wt.	Sign Post Size
S238SR16	10 lbs.	16 Ga. Wall
S238SR12	11 lbs.	12 Ga. Wall
S238SR8	12 lbs.	8 Ga. Wall

**EASY  
INSTALLATION:**  
(Hardware Included)

Simply drill (3) holes in concrete using the base as guide. Secure coupler to concrete with (3) bolts. Insert sign post and tighten set screw.



**SNAP'n SAFE™**  
Breakaway  
U Channel  
Sign Post Coupler



PATENT  
PENDING



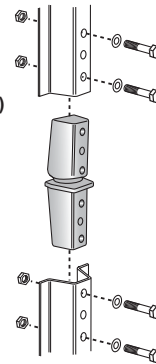
360°  
Shear  
Point

Made of cast gray iron, withstands winds of 120 mph.

Part No.	Wt.	Sign Post Size
SU800	2.5 lbs.	2#, 3#, 4#

**EASY  
INSTALLATION:**  
(Hardware Included)

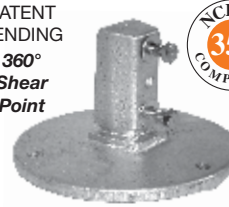
Simply insert SNAP'n SAFE Coupler in anchor and bottom of sign post and assemble with (4) bolts.



**U-CHANNEL  
SURFACE MOUNT**

PATENT  
PENDING

360°  
Shear  
Point

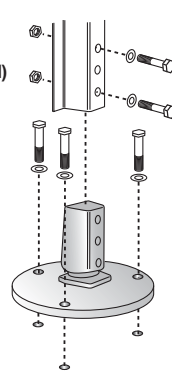


Made of cast gray iron, no concrete boring

Part No.	Wt.	Sign Post Size
SU800S	10 lbs.	2#, 3#, 4#

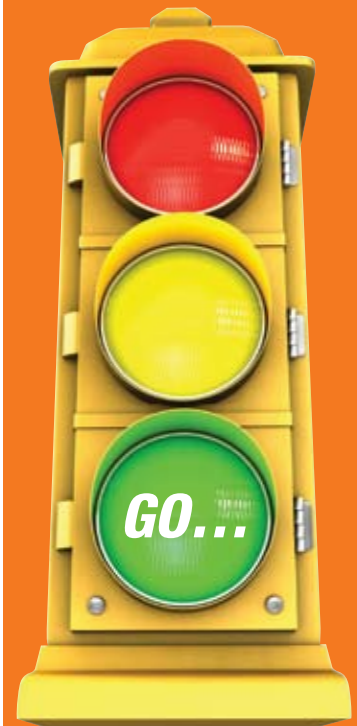
**EASY  
INSTALLATION:**  
(Hardware Included)

Simply drill (3) holes in concrete using the base as guide. Secure coupler to concrete with (3) bolts. Attach sign post with (2) bolts.



**YIELD**

...to **NEW  
Innovative  
Technology**



**DESIGNOVATIONS, INC.**

7339 WILDWOOD ROAD  
STILLMAN VALLEY, IL 61084

PHONE: 888-868-6588

FAX: 815-645-2389

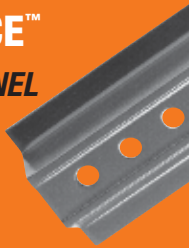
EMAIL:

sales@designovations.com

www.designovations.com

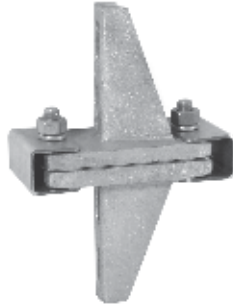
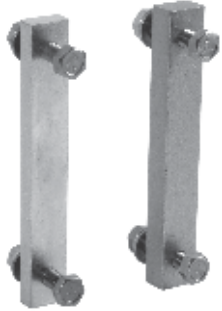
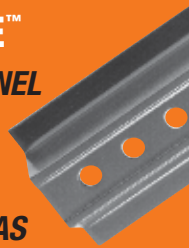
## LAP SPLICE™

THE U-CHANNEL  
BREAKAWAY  
SYSTEM  
MADE EASY.



## SLIP SAFE™

THE U-CHANNEL  
BREAKAWAY  
SYSTEM  
FOR HIGH  
IMPACT AREAS



# Our Goal – Safe Roads & Saving You Time and Money

The Manual on Uniform Traffic Control Devices (MUTCD section 2A-19) which is the national standard used for all roads open to public travel, states that roadside sign supports in the clear zone SHALL be breakaway, yielding or shielded. This requirement applies to all roads, whether publicly or privately owned.

Year	Crash Severity			All Crashes
	Fatal	Injury	Property Damage Only	
2000	86	58,234	131,814	190,133
2001	95	58,971	125,430	184,496
2002	103	54,696	128,185	182,984
2003	132	65,693	151,348	217,173
2004	100	57,782	135,833	193,715
2005	88	61,962	148,766	210,816
<b>Total</b>	<b>604</b>	<b>357,338</b>	<b>821,376</b>	<b>1,179,317</b>

Fatalities: Fatality Analysis Reporting System (FARS) 2000-2004 Final & 2005 Annual Report File (ARF)

Injuries: General Estimates System (GES) 2000 2005

NOTE: The injury and property damage numbers are not actual counts, but estimates of the actual counts. The estimates are calculated from data obtained from a nationally representative sample of crashes collected through NHTSA's General Estimates System (GES). Estimates should be rounded to the nearest 1,000. Estimates less than 500 indicate that the sample size was too small to produce a meaningful estimate and should be rounded to 0.

This report was generated by NCSA's Information Services Branch, MAD; CMS# 2006.02483; MEVENT.SAS; DMP; October 13, 2006 8:36

# TUFF'n Lite 3

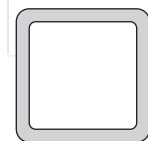
## COMPOSITE SIGN POSTS

Eliminate heavy rusting steel posts forever!

TUFF'n Lite 3 composite sign posts can be used in many applications...



- Road and Highway Signs (must be used with SNAP'n SAFE™ Breakaway Couplers)
- Transit Signage
- Informational Signage
- Architectural Signage
- Industrial Signage
- Parking Lot Signs
- Subdivision Signage



2" x 2"  
1/4" Wall

### Product Benefits:

**LIGHTWEIGHT** - less weight than steel posts, which saves you money in shipping and handling costs.

**QUICK INSTALLATION** - compatible with current 2" ground sockets for easy installation and replacement.

**MAINTENANCE FREE** - corrosion free, no painting required.

**SIZE AND COLOR CHOICE** - available in stock colors of Green, Yellow and White, in any length (custom colors available with minimum run of 5,000 feet).

**USER FRIENDLY** - easy to cut and drill holes (custom drilling available).

**NONCONDUCTIVE** - will not conduct electricity or interfere with radar.  
**SHIPPING** - UPS or Freight options.



**DESIGNOVATIONS, INC.**  
7339 WILDWOOD ROAD • STILLMAN VALLEY, IL 61084

PHONE: 888-868-6588 • FAX: 815-645-2389

EMAIL: sales@designovations.com • www.designovations.com