



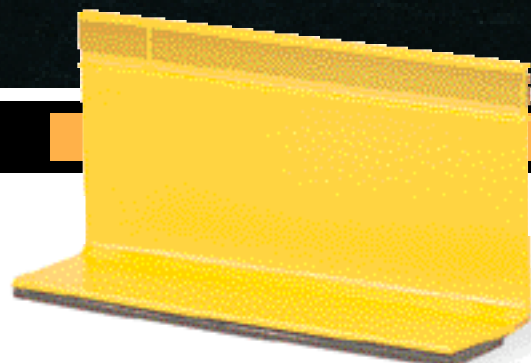
Davidson Traffic Control Products

Temporary Overlay Markers

Flexible Raised Pavement Markers



"Creating Products to Save Lives"



TOM Marker

TOMs are the Smart Choice for Marking Newly Paved Roads

Keep work zone markings from disappearing in the rain.

Work zones create hazardous driving conditions for drivers. Each year thousands of people are killed in work zone related accidents. Improved road markings and safer application methods hold the promise of improved safety and reduced accidents.

All road markings are bright when new, but most lose reflectivity when wet. These markings simply "disappear" on the road when drivers need them the most. TOMs are designed to provide positive guidance day and night, wet or dry. Unlike standard removable pavement markings, TOMs appear even brighter in the rain than they do when dry!

TOMs make installing work zone markings quick & easy. Our markers are engineered for easy application and removal to reduce the amount of time drivers and workers are exposed to work zone hazards. Newly marked roads can be opened to traffic immediately following application. They can be removed from asphalt and concrete surfaces intact at temperatures above or below freezing.


 "Davidson offers free downloadable CAD drawings and specifications from our website. Contact your local sales representative or email: hwysales@filtrona.com for details"

Temporary Overlay Markers Save Time, Money and Lives!

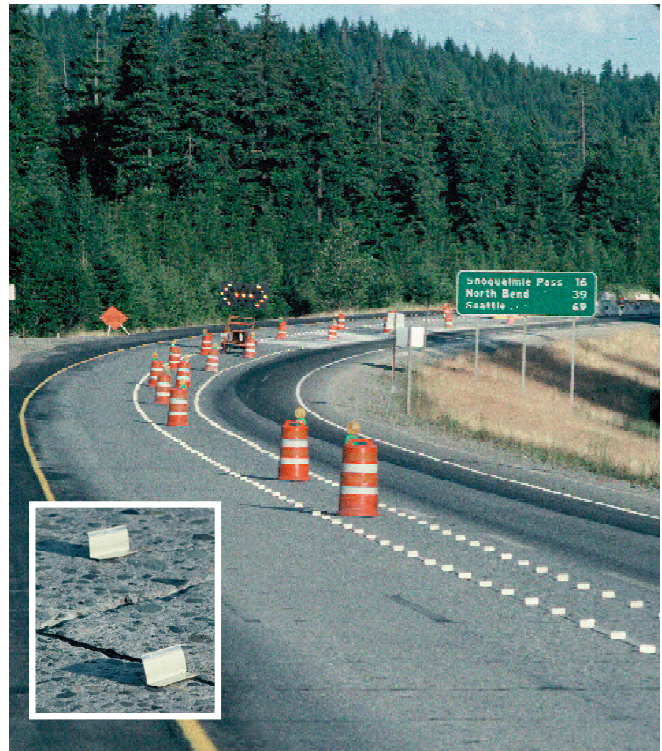
In an era of tight budgets, Temporary Overlay Markers (TOMs) are your solution for improved safety and significant cost savings. TOMs can be installed by one worker without additional equipment in just seconds. TOMs effectively simulate solid lines both day and night, can be installed in just seconds, and eliminate the need for expensive temporary striping.



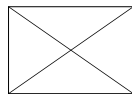
"These flexible markers stayed for a long period of time and when they were damaged they were easy to replace"

Self Adhesive Markers Take Only Seconds to Install and Remove

Quick, easy placement reduces your crew's time on the road and exposure to traffic. Our unique adhesive system keeps the TOMs securely in place. TOMs save money in the removal process too! Unlike removable tape, which may or may not come up easily, or paint which must be ground off the roadway, TOMs are removed with just a simple tug and no costly equipment.



Interstate 90 Rehab Job Snoqualmie Pass, WA.



3110 70th Avenue East / Tacoma, WA 98424 / (877) 335 4638 Fax (253) 284 8080
 e-mail: hwysales@filtrona.com / web address: www.davidsontraffic.com

Authorized Dealer



Davidson Traffic Control Products

Options and Applications for TOM Temporary Overlay Markers

“The TOMs provided good to excellent reflectivity and delineation, especially during the hours of darkness when the pavement was wet.”

Short-term or Long-term Temporary Markings

The TOM is used primarily for short-term temporary lane line markings in work zones that involve asphalt paving projects. The TOM is placed after final rolling of the new asphalt or in some cases, after fog coats or preservative seals have been applied. TOMs may also be used for long-term temporary markings such as edgelines on pavement drop-offs or for centerline markings in 2-way 2-lane detour operations.

TOMs come in standard colors of yellow and white, but are also available in additional colors by special order. TOMs may be ordered with reflective sheeting on one or both sides. While the body and reflector of the TOM is identical to our TRPM, the TOM does not require the clear plastic cover which is required for the chip or slurry seal operations.

The Most Visible Road Markers Ever Made!

Raised pavement markers are proven to provide better road markings than tape or paint, especially on wet nights when tape disappears under a film of water. Our flexible pavement markers provide superb positive guidance day and night. By day, the large, upright body of the marker provides a good indication of lane separation. At night, they light up the road like a runway.

The TOM utilizes a highly efficient cube-corner micro-prismatic reflector. These tough reflectors are very bright, resist cracking and peeling, and provide superb visibility from long distances, giving the driver advance warning of the road ahead.

“You need to provide pavement markings at the end of a day of paving. The TOM is ready to provide it when and where you need it. Just *“stick and stomp”* the marker onto the new road surface and the TOM goes to work for you!”

Save time, money, and lives by specifying TOMs for all your construction projects:

- Superior road visibility day and night
- Simple to install and remove in seconds



Options and Applications for EZ Mark™ Temporary Overlay Markers

TOM Temporary Overlay Markers

EZ Mark™ TOMs Get the Worker Out of the Roadway
Engineered for use with the RAM TPM 2100 Road Automated Marker Applicator, EZ Mark TOMs get workers out of the roadway, save time and money. EZ Mark TOMs are assembled onto continuous release paper allowing for fast and easy loading of the TPM machine. Using EZ Mark products increases your efficiency, requiring less time and fewer people to install than hand-applied, singly packaged markers.

EZ Mark TOMs are made of the same quality materials as our standard markers, and provide the same bright visibility, and

superb performance that Davidson markers have shown on roads worldwide since 1984.

Automating the installation of temporary markings allows for greater accuracy and efficiency than manually applied markers. Road workers can place EZ Mark™ TOMs with the TPM 2100™ at operable speeds of 5 miles an hour or faster.

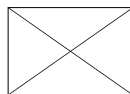
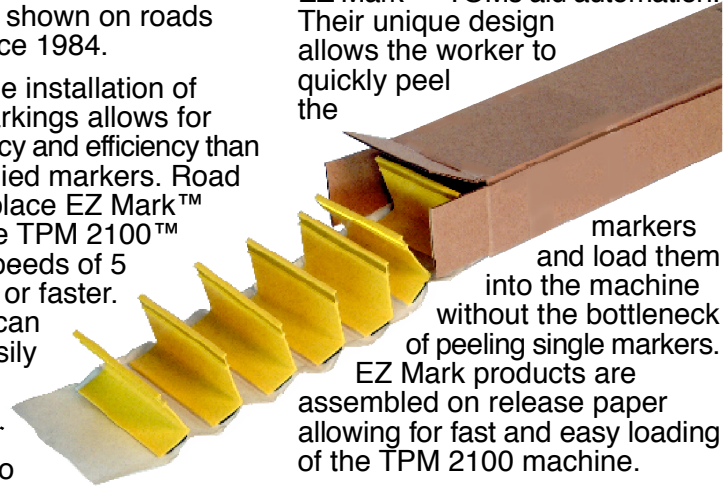
Two workers can safely and easily set miles of markers in a fraction of the time needed to do this by hand. EZ Mark™ TOMs are packaged in an accordion fashion with the release paper folded under and on top of the foot of the markers to protect the adhesive butyl until application to the roadway.


EZ Mark™ TOMs aid automation. Their unique design allows the worker to quickly peel the

markers and load them into the machine without the bottleneck of peeling single markers.

EZ Mark products are assembled on release paper allowing for fast and easy loading of the TPM 2100 machine.

Keeping workers out of the road by utilizing the EZ Mark TOM and RAM 2100 is a winning combination for everyone. Roadways marked with this system reduce the cost of labor and speed up operations.




*Davidson offers free downloadable CAD drawings and specifications from our website. Contact your local sales representative or email: hwysales@filtrona.com for details

3110 70th Avenue East / Tacoma, WA 98424 / (877) 335 4638 Fax (253) 284 8080
e-mail: hwysales@filtrona.com / web address: www.davidsontraffic.com

Authorized Dealer