

THE ROAD-RUNNER TRAFFIC SAFETY BARRICADE

Engineered grade reflective strip.
Optional 3M diamond grade retro-reflective strip both sides
white/orange 600 ft. visibility.

Custom logo or ownership plate.

Tapered and ribbed profile
increases long distance visibility.

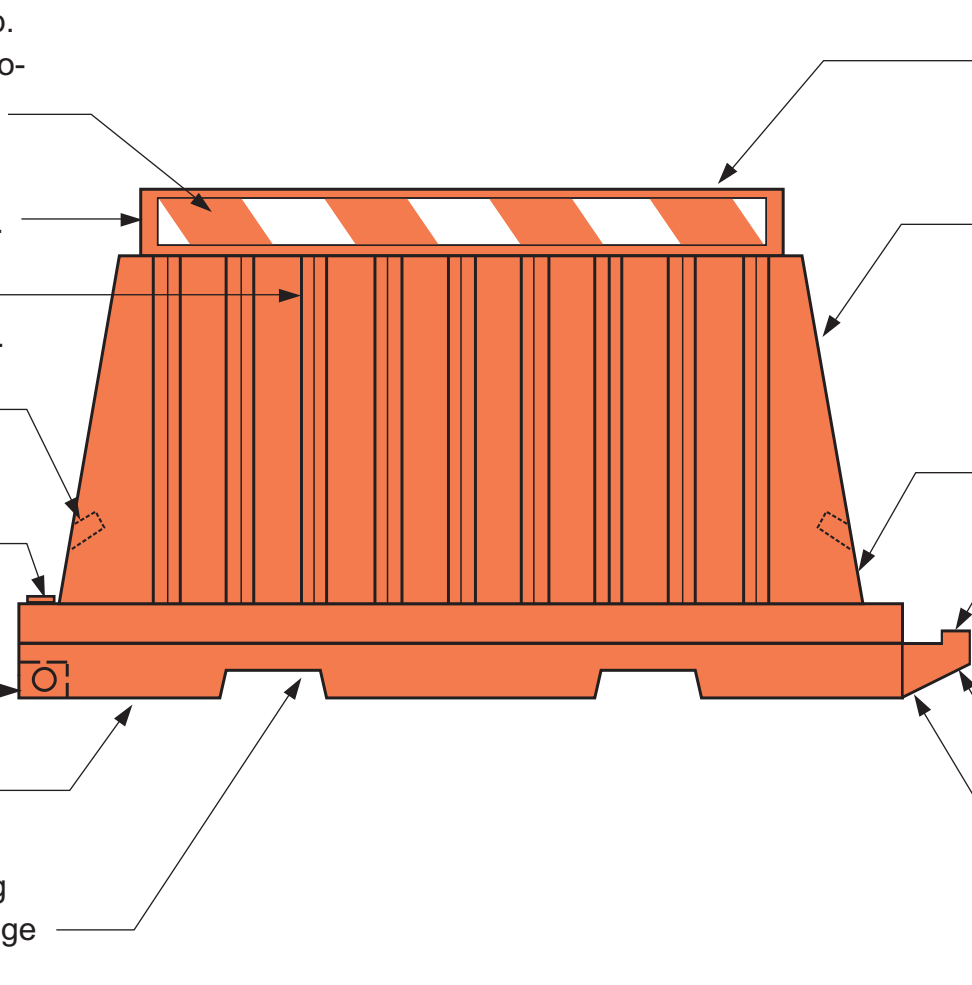
Convenient hand-lift pockets
at each end.

Water/sand fill cap keeps bugs,
mosquitoes and debris out.

Recessed drain plug.

No rusting, crumbling,
splintering or repainting.

Full size forklift slots for handling
stacked units. Also allows passage
of surface run-off.



Resilient, smooth and
lightweight polyethylene
reduces vehicle damage.

Easy cleaning and graffiti
removal. Color is solid
throughout the material.

Low centre of gravity (12 inches
up from base with no ballast).

Tongue and hook for
aligning into adjacent unit.

Linking at base allows
easy deployment over
uneven surfaces.

Tongue allows straight
line deployment or linked
curved deployment down
to a 30 ft. radius.