

VORTEQ™ TL-3 TRAILER TMA

EFFICIENT TRAILER TMA PROTECTION THAT MEETS NCHRP 350, TL-3



OVERVIEW

The Vorteq TL-3 Trailer TMA is an innovative attenuator efficiently designed to meet both mandatory & optional NCHRP 350, Test Level 3 requirements. The easy to own and operate Vorteq TL-3 Trailer TMA is lightweight and attaches to all types of host vehicles with a standard pintle hook and 7 pin electrical connector. Acceptable host vehicle weight is 9960lbs to infinite weight. No modifications are required of the host vehicle. Super fast attachment means you have full TMA protection in less than a minute. The open frame design means inspection and maintenance is quick & easy.

It's a trailer, so you can safely and affordably provide TMA protection to more of your fleet, including specialty vehicles.

The sleek Vorteq TL-3 Trailer TMA implements innovative multi-stage, tube-in-tube energy absorbing technology that inwardly shapes the steel tubing. This significantly reduces debris scatter thus reducing the potential for secondary accidents. The tube-in-tube design, along with the collapsible forward X-Brace improves structural stability. This efficiently robust design helps ensure years of durable performance.

FEATURES AND BENEFITS

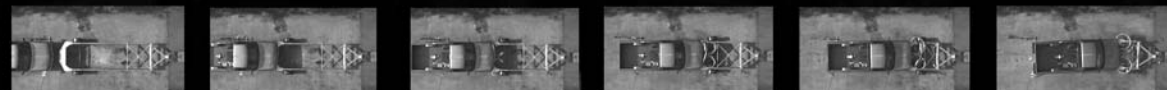
Standard equipment includes:

- ▶ All Galvanized Steel Components
- ▶ Single Pintle Hook Attachment
- ▶ LED Trailer Lighting Package
- ▶ 7 Pin Trailer Electrical Connector
- ▶ Safety Breakaway Chains
- ▶ Torsional Axle
- ▶ 2000 lb. Trailer Jack
- ▶ Striped Strike Plate
- ▶ Integrated Custom Fenders

Optional Equipment available:

- ▶ Premium System Cover
- ▶ Arrowboard Mounting Systems
- ▶ Arrowboard
- ▶ Bearing Buddies
- ▶ Spare Tire w/ Tire Mount

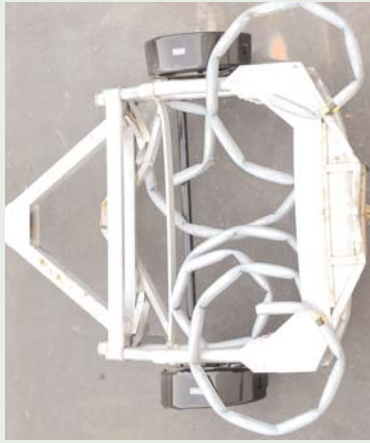
SAVING LIVES BY DESIGN



ENERGY ABSORPTION
SYSTEMS, INC.

WWW.ENERGYABSORPTION.COM

POST IMPACT DEBRIS CONTAINMENT



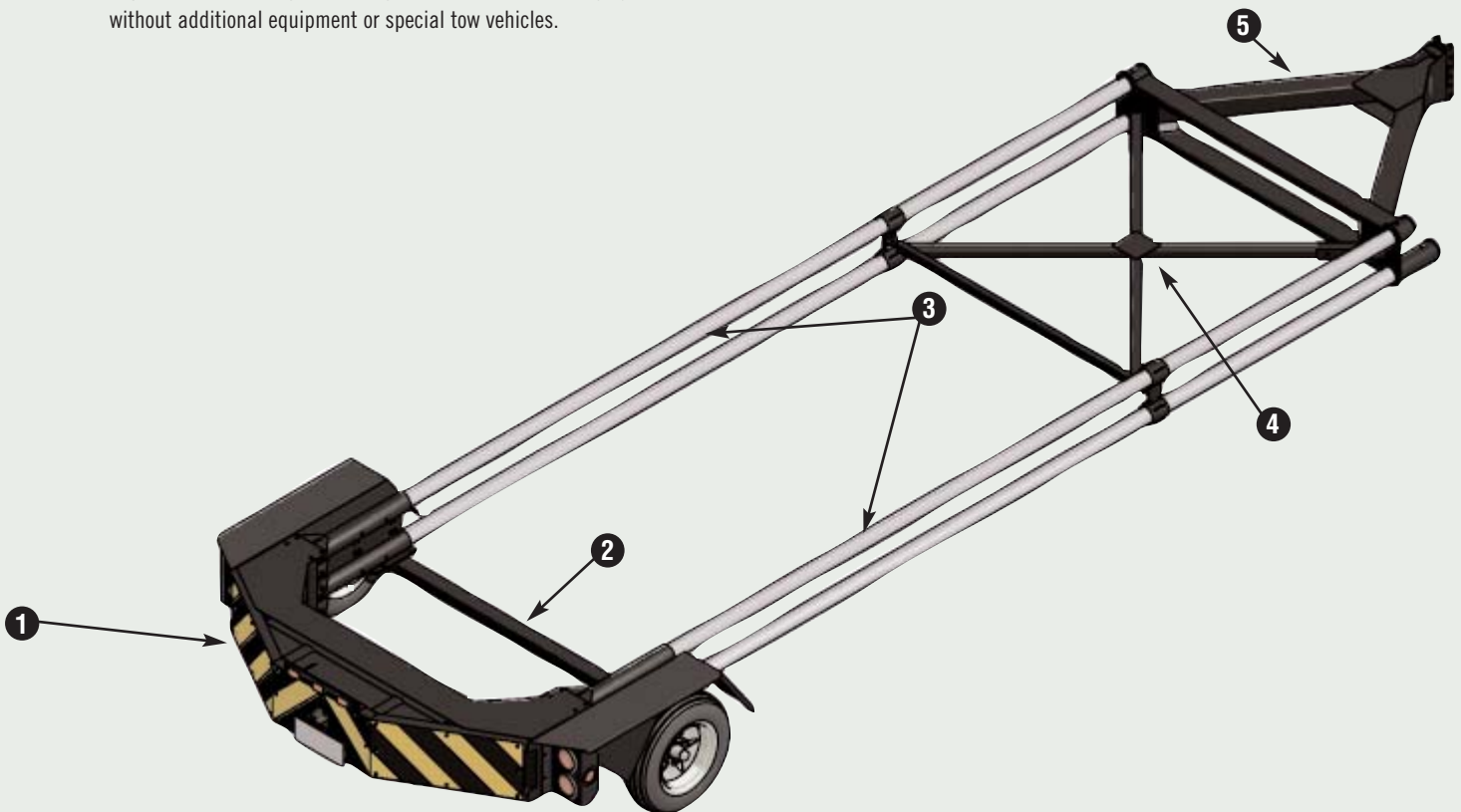
With any high speed accident, it is expected that some material will scatter throughout the accident "zone". This debris scatter presents a hazard to other traffic, pedestrians, personnel in the work zone, and ultimately the clean up crew. The Vorteq TL-3 Trailer TMA is designed to minimize the TMA debris scatter by curling the energy absorbing frame rails inwardly. This inward spiraling of the tubes creates a contained and compact system that is safer,

easier and quicker to clean up and remove after impact. Furthermore, the wheels and axle are designed to stay connected and functional after design impacts thus allowing the damaged unit to be driven away by the host vehicle without additional equipment or special tow vehicles.

SPECIFICATIONS

Length	22.9 ft.	6.98 m
Width	92 in.	234 cm
Height	30.5 in.	77.5 cm
Tongue Weight	300 lb.	136 kg
Total Weight	<1300 lb.	<590 kg

- 1 IMPACT HEAD
- 2 WHEEL/AXLE ASSEMBLY
- 3 TUBE-IN-TUBE FRAME RAILS
- 4 X-BRACE
- 5 TONGUE ASSEMBLY



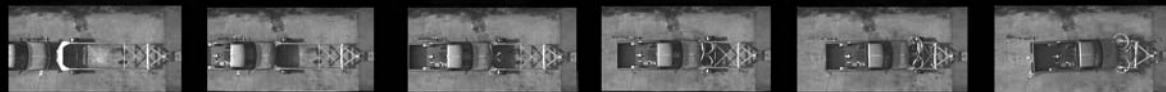
WWW.QUIXTRANS.COM



**ENERGY ABSORPTION
SYSTEMS, INC.**

35 East Wacker Drive • Chicago, IL 60601
Tel: (312) 467-6750 • Fax: (312) 467-9625
www.energyabsorption.com

SAVING LIVES BY DESIGN



Distributed By:

General specifications for the Vorteq TL-3 Trailer TMA are subject to change without notice to reflect improvements and upgrades. Additional information is available in the Product Manual for this system. Contact Energy Absorption Systems for details.