



# *Saving Lives*

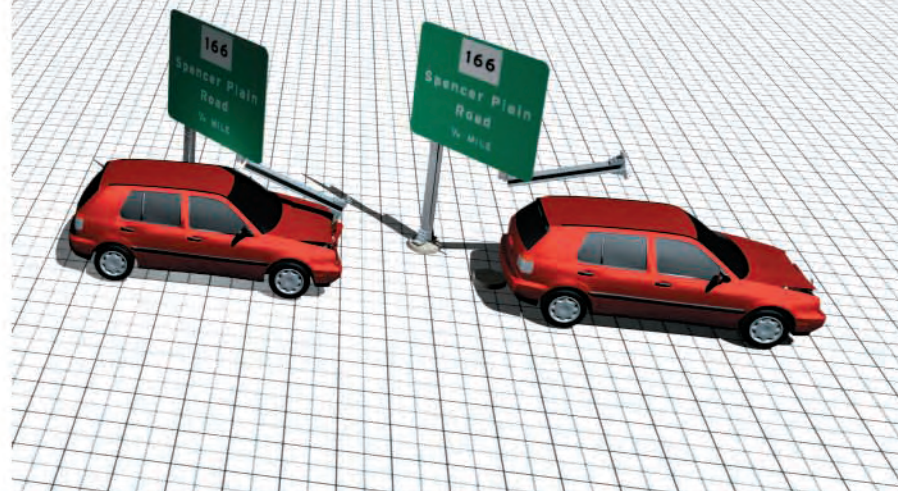
## *Omni-directional Breakaway Sign Support System*



Transpo's Break-Safe<sup>®</sup> is an omni-directional breakaway support system for ground mounted signs located within roadside clear zones or other locations vulnerable to vehicular impacts. The system is designed to breakaway quickly and cleanly upon impact, thus saving lives and reducing

property damage costs. Break-Safe couplings are omni-directional, meaning the system breaks away with consistent, predictable behavior regardless of the vehicles angle of impact.

Break-Safe has been vehicle crash-tested resulting in a FHWA approval letter based on NCHRP report 350. In addition to superior safety performance, Break-Safe provides high structural load carrying capacity. New national signing standards specify increased sign sizes for visibility, in addition to increased wind load levels. These changes create a significant increase in structural demands on sign supports. Break-Safe is designed to support a wide range of post sizes, up to and including the largest permitted by AASHTO. The flexibility built into the system gives you many choices when selecting post types and sizes for specific applications.



## Features and Advantages

**Omni-Directional Breakaway Performance** – Accident research and field experience have demonstrated that vehicles often leave the roadway and impact structures at high angles of incident. Break-Safe’s symmetrical coupling design allows the system to breakaway with consistent, predictable behavior regardless of the vehicle’s angle of impact. This unique omni-directional capability exceeds FHWA and AASHTO requirements for impact performance. All Break-Safe models are FHWA-approved for use on the National Highway System (NHS).

**High Structural Capacity** – Break-Safe is available in a variety of models, designed to support different sign configurations and post types. The high-strength coupling and L-bracket design provides increasing structural capacity as the size of the post increases. This unique feature offers unmatched load-carrying capacity, and accommodates many different post types for both single and multiple post configurations.



### Easy to Install and Maintain

No special tools or equipment are required to properly install and maintain Break-Safe. All components are easily secured using the American Institute of Steel Construction (AISC) Turn-of-Nut Tightening method, which eliminates the torque requirement typical with other systems.

U.S. Patent Nos. 4,528,786 and 5,596,845

## Model Selection:

### Break-Safe Model A Series:

Break-Safe Model	Post Type and Size
A14	4", 5" Standard I-Beams
A16	W6x9 Wide Flange
AP	3", 3.5", 4", 4.5" O.D. Round Pipes
AS	2.5", 3", 4", 5" Square Tubes
AU	4, 6, 8 lb Back-to-Back U-Channels

### Break-Safe Model B Series:

Break-Safe Model	Post Type and Size
B525	6", 8" Wide Flange
B650	10"-21" Wide Flange
	6", 7", 8" Square Tubes

**Low Profile** – Break-Safe offers the lowest stub height after impact of any current breakaway system for signs. This is essential for maximum safety and allows for variations in foundation height. Break-Safe’s after-impact stub height is less than 25 mm (1 in) above the top of the foundation.

**TESTED AND APPROVED TO NCHRP 350**