

N-E-A-T™ SYSTEM

THE NON-REDIRECTIVE ENERGY ABSORBING TERMINAL



OVERVIEW

The N-E-A-T System is an end treatment solution for temporary work zones. This Non-Redirective, Energy-Absorbing Terminal provides impact protection for speeds up to 70 km/h (45 mph). It meets NCHRP 350, Test Level 2 criteria for Non-Redirective Crash Cushions. The N-E-A-T System's cartridge is lightweight, weighing less than 135 kg (297 lbs.). It is compact, as well, measuring less than 3.0 meters (10 ft.) in length. The system can be installed in less than 15 minutes without the use of special tools or heavy equipment.

The N-E-A-T System consists of a unique configuration of aluminum cells encased in an aluminum shell that withstands harsh weather and environmental conditions. The basic components of the system are:

- ▶ A one piece, aluminum cartridge
- ▶ Steel backup and attachment hardware
- ▶ Steel transition panels

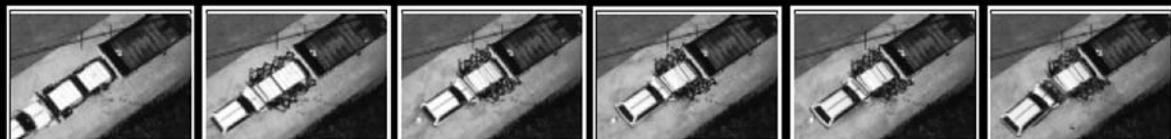
The system's unique design allows for easy attachment to the end of concrete barrier utilizing the barrier's existing pin and loop connection. The nose of the system is equipped with a chevron sign, which is reversible for unidirectional or bi-directional traffic. The cartridge features integrated caster wheels to aid in repositioning and resetting.

FEATURES AND BENEFITS

- ▶ Easy installation due to very few components – takes less than 15 minutes!
- ▶ Lightweight design means superior portability – weighs less than 135 kg (297 lbs.)
- ▶ No special tools or heavy equipment required for installation.
- ▶ Integrated caster wheels aid in positioning and resetting.
- ▶ Meets NCHRP 350, Test Level 2 criteria for Non-Redirective Crash Cushions.
- ▶ Self-contained cartridge eliminates post-impact debris for easy clean-up and refurbishment.
- ▶ Anchors to portable barrier - ground anchorage not required.



SAVING LIVES BY DESIGN



ENERGY ABSORPTION
SYSTEMS, INC.

WWW.ENERGYABSORPTION.COM

EASY INSTALLATION & MAINTENANCE

The N-E-A-T System's lightweight design and few components make it ideal for temporary work zone applications. The system does not require a concrete pad. In fact, it is not even anchored to the ground. Rather, it is anchored to the concrete barrier using the barrier's own connection for attachment. The N-E-A-T System is installed using four easy steps:



Steel brackets and backup plates are attached to the loops at the end of the concrete barrier with a unique wedge and threaded rod connection.



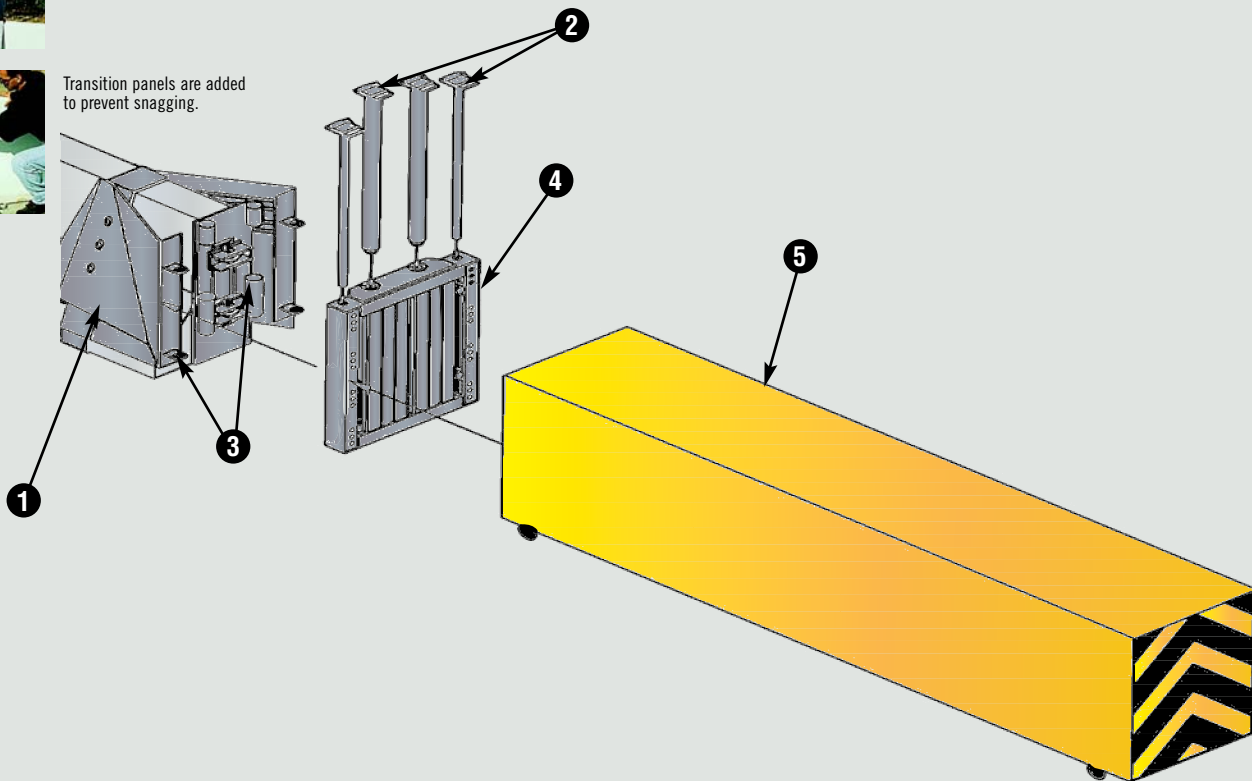
A steel collar is placed over the barrier end.



The aluminum cartridge is wheeled into position and steel pins are used to secure it.



Transition panels are added to prevent snagging.



SPECIFICATIONS

Length	2960 mm (116- 7/16 in.)
Width	570 mm (22-1/2 in.)
Height	810 mm (32 in.)
Weight	135 kg (297 lbs.)

- 1 TRANSITION PANELS
- 2 CONNECTING PINS
- 3 ATTACHMENT HARDWARE
- 4 BACKUP
- 5 CARTRIDGE



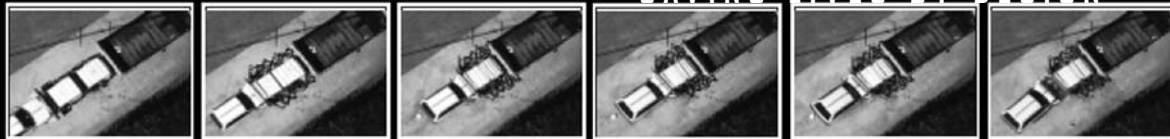
WWW.QUIXTRANS.COM



ENERGY ABSORPTION
SYSTEMS, INC.

35 East Wacker Drive • Chicago, IL 60601
Tel: (312) 467-6750 • Fax: (312) 467-9625
www.energyabsorption.com

SAVING LIVES BY DESIGN



Distributed By:

General specifications for the N-E-A-T System are subject to change without notice to reflect improvements and upgrades. Additional information is available in the Product Manual for this system. Contact Energy Absorption Systems for details.