

REACT 350[®] SYSTEM

A COMPLETE LINE OF SELF RESTORING CRASH CUSHIONS



OVERVIEW

The REACT 350 System features “smart plastic” cylinders made of high molecular weight, high-density polyethylene (HMW/HDPE) plastic. When impacted within the design capacity specified in NCHRP 350, they typically regain up to 90% of their original shape and capacity without maintenance or repair of major components. The REACT 350 System includes a range of units for design speeds from 72 km/h (45 mph) to 100 km/h (62 mph) and hazards up to 910 mm (36") wide. REACT 350 Wide Systems are also available to protect hazards wider than 910 mm (36").

Satisfies NCHRP 350, Test Levels 1, 2, & 3

The REACT 350 Systems satisfy NCHRP 350, Test Levels 1, 2 and 3 criteria (based on number of cylinders) as redirective, non-gating crash cushions. They are designed to attenuate head-on impacts and redirect side angle impacts.

FEATURES AND BENEFITS

- ▶ Self-restoring and reusable after most impacts
- ▶ Able to withstand a number of impacts without the need for major repairs or parts
- ▶ Pre-assembled at factory for easy installation — only minor assembly required at the site
- ▶ Minimal maintenance and refurbishment — spare parts typically not required
- ▶ Low lifecycle cost in comparison to disposable systems

The REACT 350 System will regain 90% of its original shape after impact without maintenance or repair of major components



ENERGY ABSORPTION
SYSTEMS, INC.

WWW.ENERGYABSORPTION.COM

SAVING LIVES BY DESIGN



MINIMAL MAINTENANCE AND REFURBISHMENT

After a typical design impact, the REACT 350 units can be quickly restored by simply overpulling the plastic cylinders and holding them in the extended position. Spare parts are typically not required. Limited exposure to traffic provides for optimum safety for maintenance workers.

The REACT 350 Systems are available with a self-contained backup or a concrete-mounted backup system. The concrete-mounted backup system allows the unit to be attached directly to an existing or new concrete backup at the site. The "smart plastic" cylinders are arranged in different configurations to achieve the required design speed capacity and system width for a specific site.

SPECIFICATIONS

36 INCH TL-3

Width at Backup

*Weight

*Length

SELF-CONTAINED
BACKUP

910 mm (36")

1851 kg (4080 lb)

9.35 m (30'3")

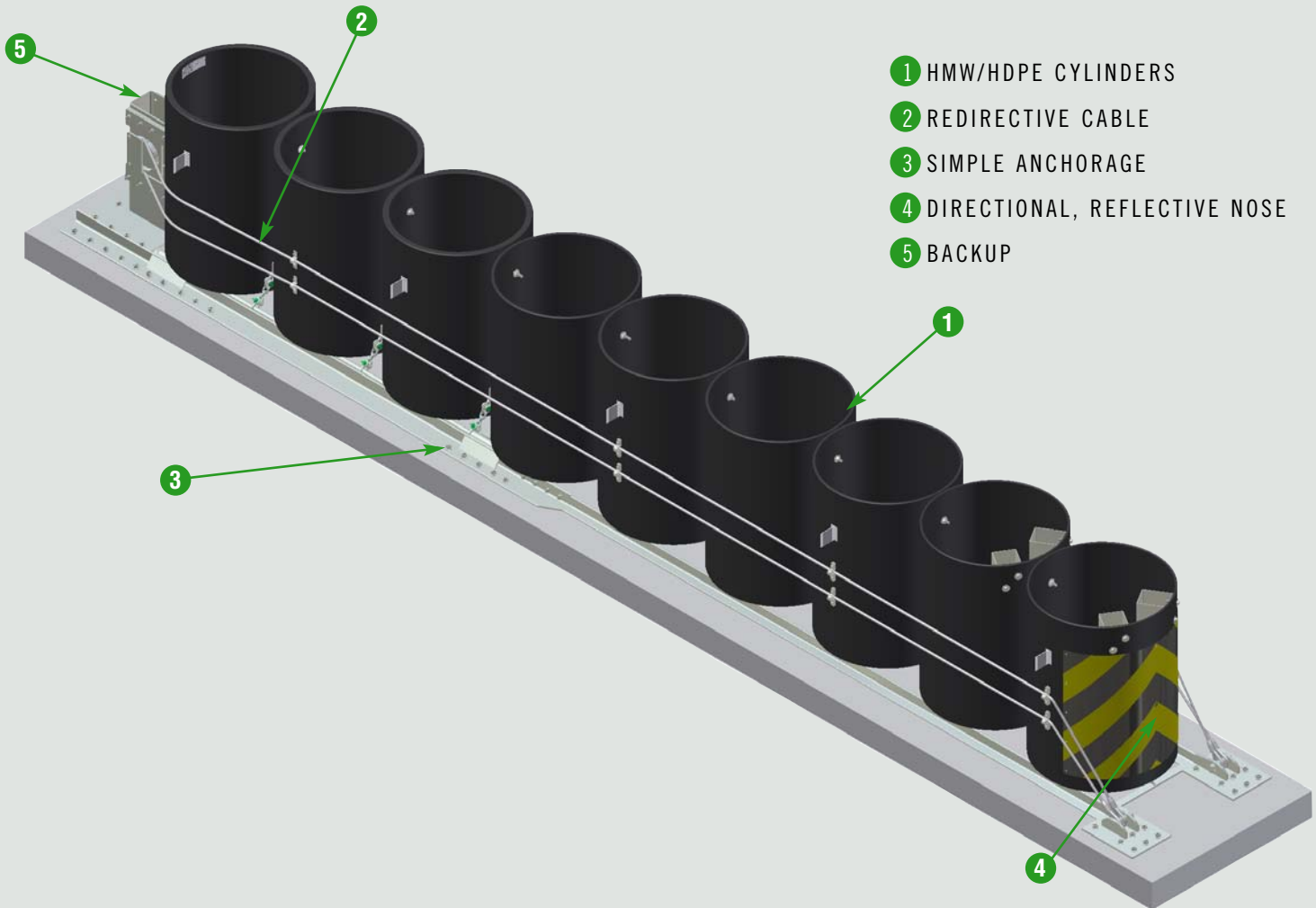
CONCRETE-MOUNTED
BACKUP

910 mm (36")

1955 kg (4310 lb)

8.80 m (28'9")

**Typical 9-cylinder (100 km/h, 62 mph), single row unit.*



- 1 HMW/HDPE CYLINDERS
- 2 REDIRECTIVE CABLE
- 3 SIMPLE ANCHORAGE
- 4 DIRECTIONAL, REFLECTIVE NOSE
- 5 BACKUP

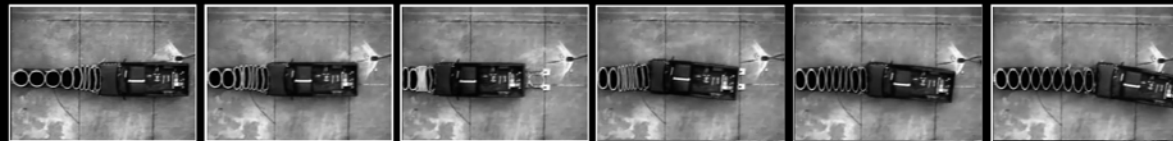


WWW.QUIXTRANS.COM



35 East Wacker Drive • Chicago, IL 60601
Tel: (312) 467-6750 • Fax: (312) 467-9625
www.energyabsorption.com

SAVING LIVES BY DESIGN



Distributed By:

General specifications for the REACT 350 System are subject to change without notice to reflect improvements and upgrades. Additional information is available in the Product Manual for this system. Contact Energy Absorption Systems for details.